

Interface®

# COMFORT INN & COMFORT SUITES



## APPROVED PROTOTYPES

Cambria Hotel & Suites  
Comfort Inn  
Comfort Suites  
Everhome Suites  
Mainstay Suites  
Sleep Inn

# WHY INTERFACE HOSPITALITY?

Interface Hospitality is a **CHOICE HOTELS** approved supplier of carpet tile and LVT. We are currently approved on the following prototypes:

- Cambria Hotel & Suites
- Comfort Inn
- Comfort Suites
- Everhome Suites
- Mainstay Suites
- Sleep Inn



## SMART, EFFICIENT, AND BUILT TO LAST

### Seamless Installation & Design Flexibility

Interface modular flooring tiles are designed for effortless installation with systems like TacTiles®—our no-glue solution that reduces VOCs and waste. Choose from multiple sizes and patterns to create tailored designs that fit your needs while optimizing material usage.

### Cost Efficiency, Built-In

Reduce hidden costs with modular tiles—no roll sizes, no wasteful cuts, and an average of only 3-4% waste compared to broadloom's 14%. Our selective replacement system minimizes disruption, allowing you to replace flooring in stages and save up to 50% on replacement costs.

### Durability You Can Count On

Every product is backed by a 15-year warranty, combining innovative features like Intersept® mold protection and Protekt<sup>2</sup>™ stain resistance for unparalleled longevity. With modular carpet, you're investing in a solution that performs and saves in the long run.



## DESIGNED FOR PERFORMANCE AND PEOPLE

### Innovative Fibers for Vibrant, Sustainable Style

All Interface carpet tiles are made from 100% solution-dyed nylon—engineered for vibrant, fade-resistant color without the need for water or harmful chemicals in production.

### The Power of Integrated Systems

Interface tiles span a variety of sizes and textures, enabling endless creative possibilities. Our modular designs seamlessly integrate with LVT for holistic flooring solutions without transition strips, redefining design flexibility.

### Health-Conscious Choices

Our Intersept<sup>®</sup> treatment guarantees mold protection and uses no halogens, heavy metals, or harmful chemicals. It's EPA-approved for safe use, ensuring healthier spaces for your guests and teams.

## SUSTAINABILITY & END-OF-LIFE SOLUTIONS

### Transparency at Every Step

Sustainability comes standard. With third-party certifications and 99% renewable energy powering our U.S. manufacturing, Interface delivers flooring that's both high-performing and environmentally conscious.

### Recycling Made Simple with ReEntry<sup>®</sup>

Through ReEntry<sup>®</sup>, we reclaim and recycle used carpet tiles and Sound Choice<sup>™</sup> LVT, keeping valuable materials out of landfills. As North America's only third-party-certified flooring recycling program, we set the benchmark for responsible end-of-life solutions.

### Smarter Installations for a Smaller Footprint

TacTiles<sup>®</sup> eliminate the need for adhesives with carpet tiles, cutting installation waste by 90%. Combined with modular flooring's reduced waste profile, this innovation ensures your project leaves a lighter environmental footprint.

## CITY SCHEME GUESTROOM PROTOTYPE ORDER INFORMATION

Carpet tiles **SAVE APPROXIMATELY 18%-20% IN PRODUCT WASTE** versus broadloom, based on prototype layout.

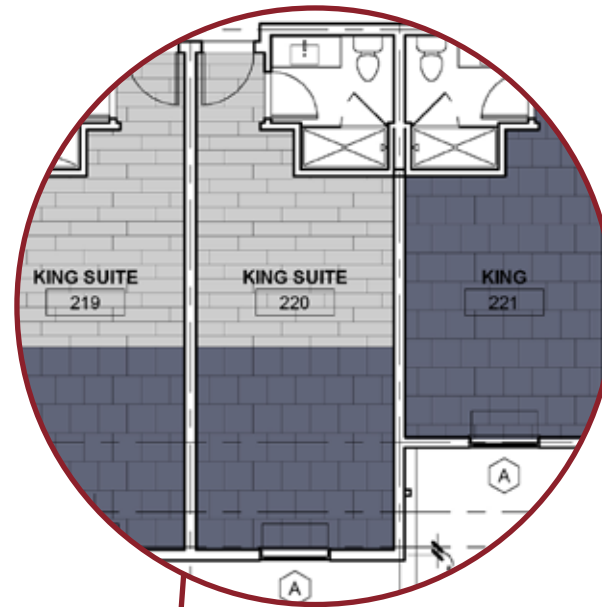


PRODUCT	ITEM#	COLOR#	SAMPLE#	SIZE	INSTALLATION
A Custom	CPT-002A	190556	269199-230	50 cm x 50 cm	Ashlar
B LVT Natural Woodgrains	LVT-001A	A00208 Sand Dune		25 cm x 1 m	Ashlar

INSTALLATION SPECIFICATIONS	DESCRIPTION
XL2000 PLUS Adhesive	Glue Down Install

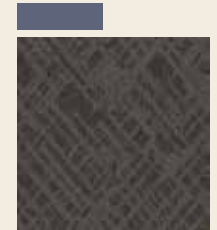
## CITY SCHEME GUESTROOM INSTALLATION PLAN

All quantities are estimates only and are based on plans provided. Site measurements and field verifications are recommended to ensure accuracy. These quantities are not intended to be used for material ordering purposes. Since waste factors may vary by installer, actual ordering quantities are the responsibility of your flooring contractor.



### LEGEND

A



**PRODUCT:** Custom  
**ITEM:** CPT-002A  
**COLOR/SAMPLE:** 190566\_269199-230  
**SIZE:** 50 cm x 50 cm  
**INSTALLED:** Ashlar

B



**PRODUCT:** LVT Natural Woodgrains  
**ITEM:** LVT-001A  
**COLOR:** A00208 Sand Dune  
**SIZE:** 25 cm x 1 m  
**INSTALLED:** Ashlar

## SEA SCHEME GUESTROOM PROTOTYPE ORDER INFORMATION

Carpet tiles **SAVE APPROXIMATELY 18%-20% IN PRODUCT WASTE** versus broadloom, based on prototype layout.

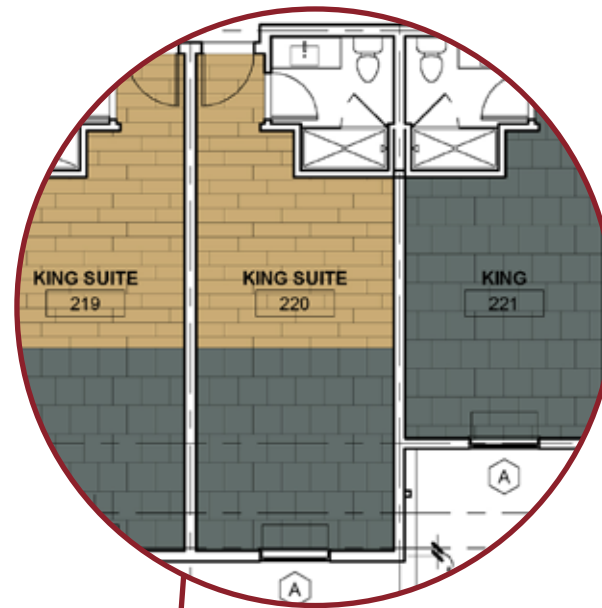


PRODUCT	ITEM#	COLOR#	SAMPLE#	SIZE	INSTALLATION
<b>A</b> Custom	CPT-002B	190739	269199-248	50 cm x 50 cm	Ashlar
<b>B</b> LVT Textured Woodgrains	LVT-001B	A00415 Antique Oak		25 cm x 1 m	Ashlar

INSTALLATION SPECIFICATIONS	DESCRIPTION
XL2000 PLUS Adhesive	Glue Down Install

## SEA SCHEME GUESTROOM INSTALLATION PLAN

All quantities are estimates only and are based on plans provided. Site measurements and field verifications are recommended to ensure accuracy. These quantities are not intended to be used for material ordering purposes. Since waste factors may vary by installer, actual ordering quantities are the responsibility of your flooring contractor.



### LEGEND

A



**PRODUCT:** Custom  
**ITEM:** CPT-002B  
**COLOR/SAMPLE:** 190739\_269199-248  
**SIZE:** 50 cm x 50 cm  
**INSTALLED:** Ashlar

B



**PRODUCT:** LVT Textured Woodgrains  
**ITEM:** LVT-001B  
**COLOR:** A00415 Antique Oak  
**SIZE:** 25 cm x 1 m  
**INSTALLED:** Ashlar

## SUN SCHEME GUESTROOM PROTOTYPE ORDER INFORMATION

Carpet tiles **SAVE APPROXIMATELY 18%-20% IN PRODUCT WASTE** versus broadloom, based on prototype layout.

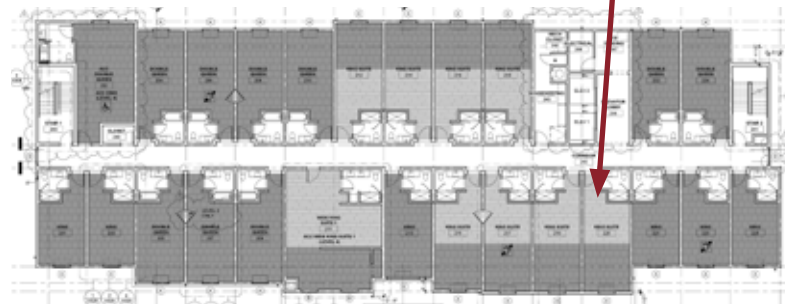
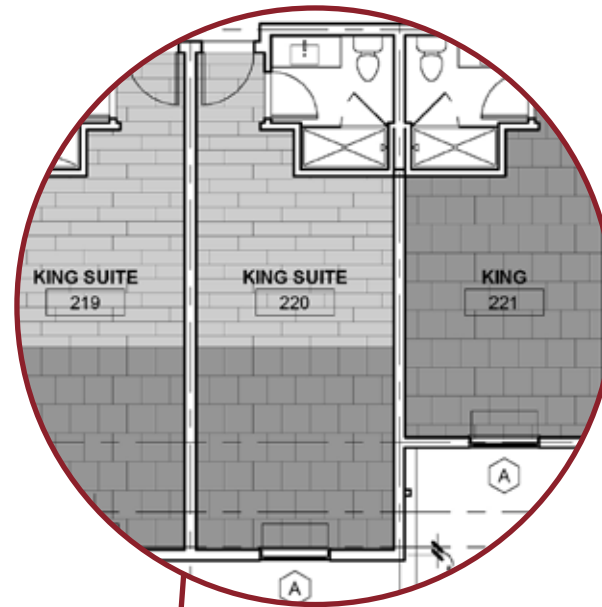


PRODUCT	ITEM#	COLOR#	SAMPLE#	SIZE	INSTALLATION
A Custom	CPT-002C	190740	269199-249	50 cm x 50 cm	Ashlar
B LVT Natural Woodgrains	LVT-001C	A00405 Grey Dune		25 cm x 1 m	Ashlar

INSTALLATION SPECIFICATIONS	DESCRIPTION
XL2000 PLUS Adhesive	Glue Down Install

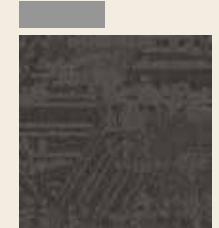
## SUN SCHEME GUESTROOM INSTALLATION PLAN

All quantities are estimates only and are based on plans provided. Site measurements and field verifications are recommended to ensure accuracy. These quantities are not intended to be used for material ordering purposes. Since waste factors may vary by installer, actual ordering quantities are the responsibility of your flooring contractor.



## LEGEND

A



**PRODUCT:** Custom  
**ITEM:** CPT-002C  
**COLOR/SAMPLE:**  
190740\_269199-249  
**SIZE:** 50 cm x 50 cm  
**INSTALLED:** Ashlar

B



**PRODUCT:** LVT Natural Woodgrains  
**ITEM:** LVT-001C  
**COLOR:** A00405 Grey Dune  
**SIZE:** 25 cm x 1 m  
**INSTALLED:** Ashlar

## CITY SCHEME CORRIDOR PROTOTYPE ORDER INFORMATION

Carpet tiles **SAVE APPROXIMATELY 18%-20% IN PRODUCT WASTE** versus broadloom, based on prototype layout.

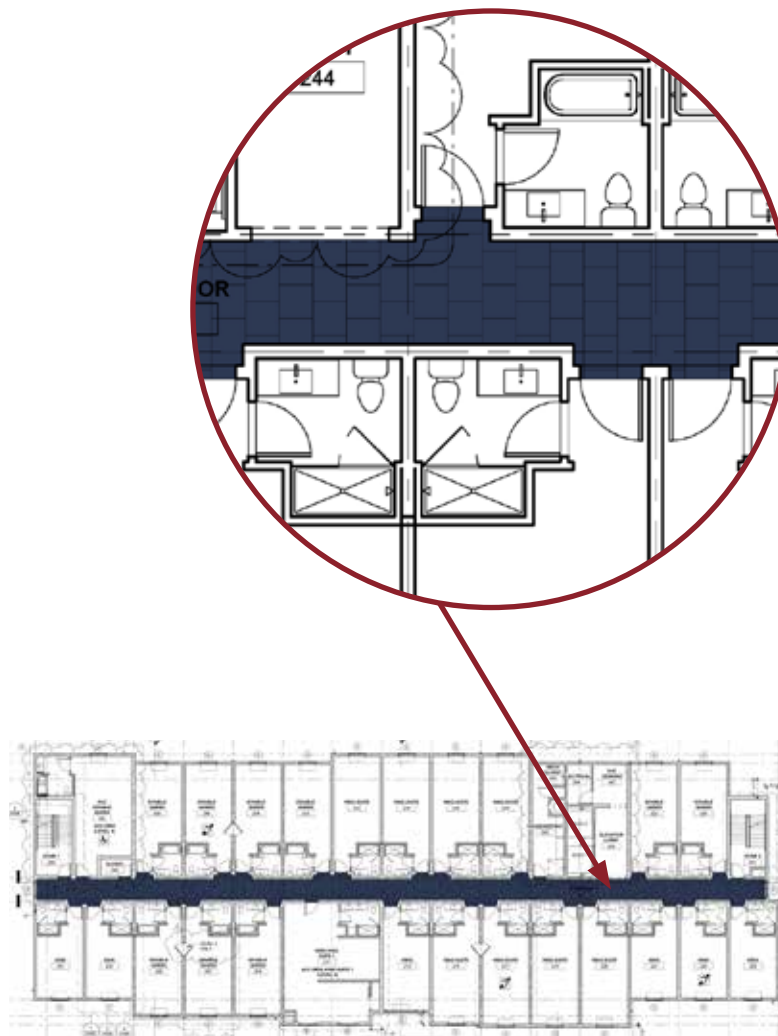


PRODUCT	ITEM#	COLOR#	SAMPLE#	SIZE	INSTALLATION
Custom	CPT-011A	190738	269199-237	50 cm x 50 cm	Ashlar

INSTALLATION SPECIFICATIONS	DESCRIPTION
XL2000 PLUS Adhesive	Glue Down Install

## CITY SCHEME CORRIDOR INSTALLATION PLAN

All quantities are estimates only and are based on plans provided. Site measurements and field verifications are recommended to ensure accuracy. These quantities are not intended to be used for material ordering purposes. Since waste factors may vary by installer, actual ordering quantities are the responsibility of your flooring contractor.



### LEGEND



**PRODUCT:** Custom  
**ITEM:** CPT-011A  
**COLOR/SAMPLE:**  
190738\_269199-237  
**SIZE:** 50 cm x 50 cm  
**INSTALLED:** Ashlar

## SEA SCHEME CORRIDOR PROTOTYPE ORDER INFORMATION

Carpet tiles **SAVE APPROXIMATELY 18%-20% IN PRODUCT WASTE** versus broadloom, based on prototype layout.

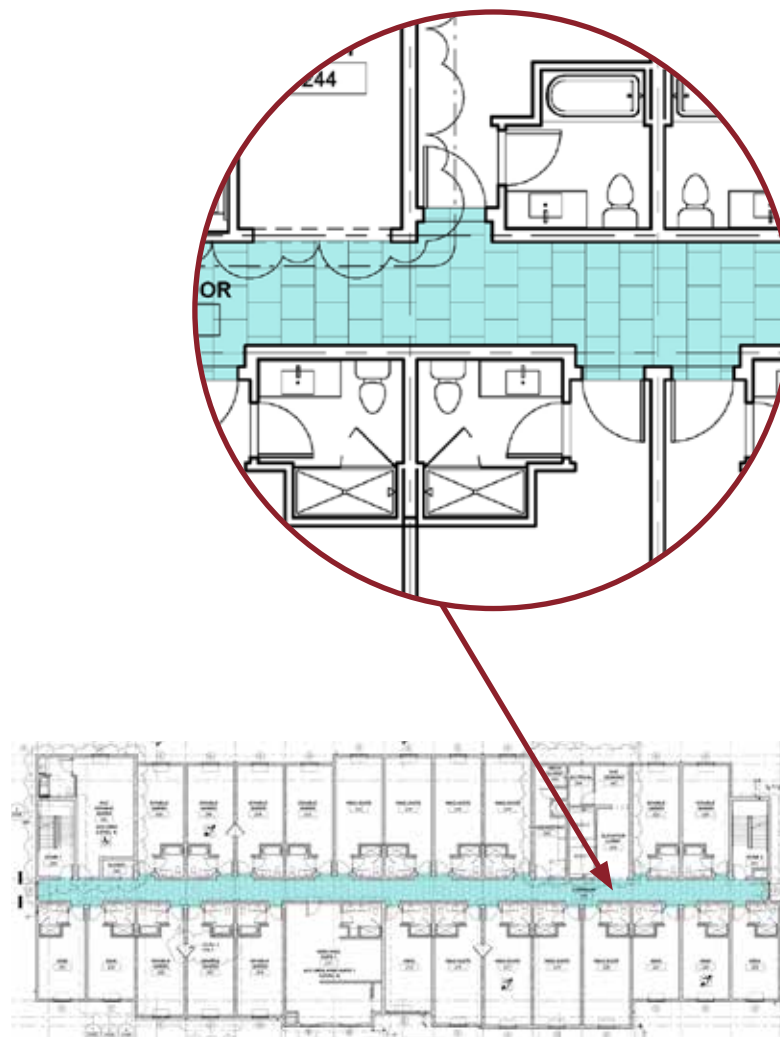
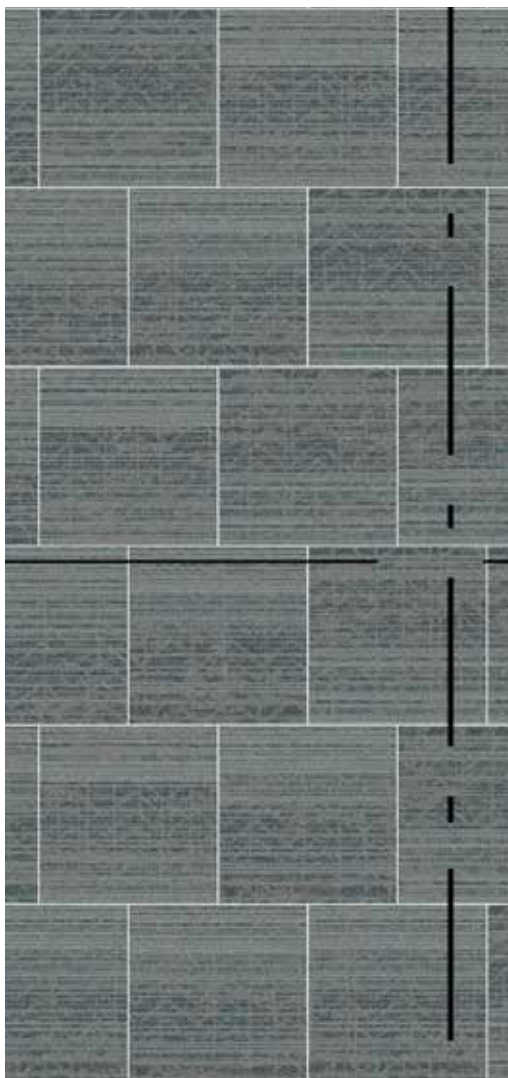


PRODUCT	ITEM#	COLOR#	SAMPLE#	SIZE	INSTALLATION
Custom	CPT-011B	190634	269199-270	50 cm x 50 cm	Ashlar

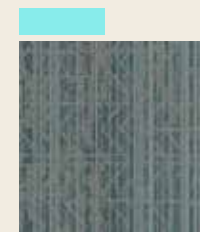
INSTALLATION SPECIFICATIONS	DESCRIPTION
XL2000 PLUS Adhesive	Glue Down Install

## SEA SCHEME CORRIDOR INSTALLATION PLAN

All quantities are estimates only and are based on plans provided. Site measurements and field verifications are recommended to ensure accuracy. These quantities are not intended to be used for material ordering purposes. Since waste factors may vary by installer, actual ordering quantities are the responsibility of your flooring contractor.



### LEGEND



**PRODUCT:** Custom  
**ITEM:** CPT-011B  
**COLOR/SAMPLE:**  
190634\_269199-270  
**SIZE:** 50 cm x 50 cm  
**INSTALLED:** Ashlar

## SUN SCHEME CORRIDOR PROTOTYPE ORDER INFORMATION

Carpet tiles **SAVE APPROXIMATELY 18%-20% IN PRODUCT WASTE** versus broadloom, based on prototype layout.

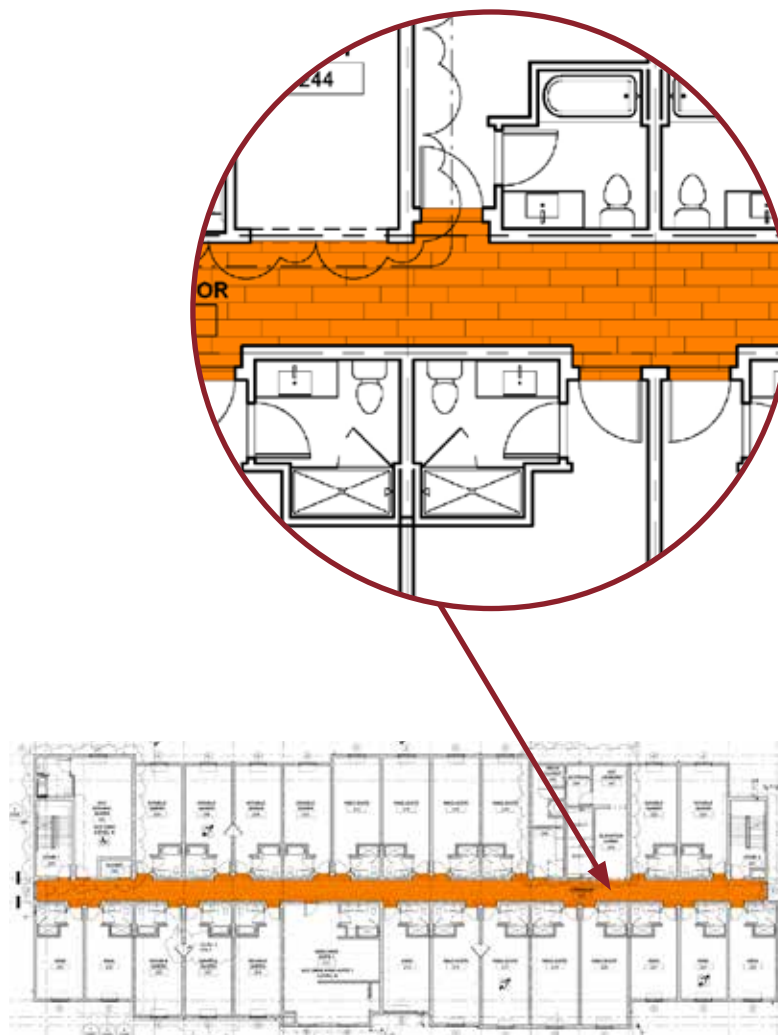


PRODUCT	ITEM#	COLOR#	SAMPLE#	SIZE	INSTALLATION
Custom	CPT-011C	190741	269199-253	25 cm x 1 m	Ashlar

INSTALLATION SPECIFICATIONS	DESCRIPTION
XL2000 PLUS Adhesive	Glue Down Install

## SUN SCHEME CORRIDOR INSTALLATION PLAN

All quantities are estimates only and are based on plans provided. Site measurements and field verifications are recommended to ensure accuracy. These quantities are not intended to be used for material ordering purposes. Since waste factors may vary by installer, actual ordering quantities are the responsibility of your flooring contractor.



### LEGEND



**PRODUCT:** Custom  
**ITEM:** CPT-011C  
**COLOR/SAMPLE:**  
190741\_269199-253  
**SIZE:** 25 cm x 1 m  
**INSTALLED:** Ashlar

## RISE & SHINE BACK OF HOUSE PROTOTYPE ORDER INFORMATION

Carpet tiles **SAVE APPROXIMATELY 18%-20% IN PRODUCT WASTE** versus broadloom, based on prototype layout.

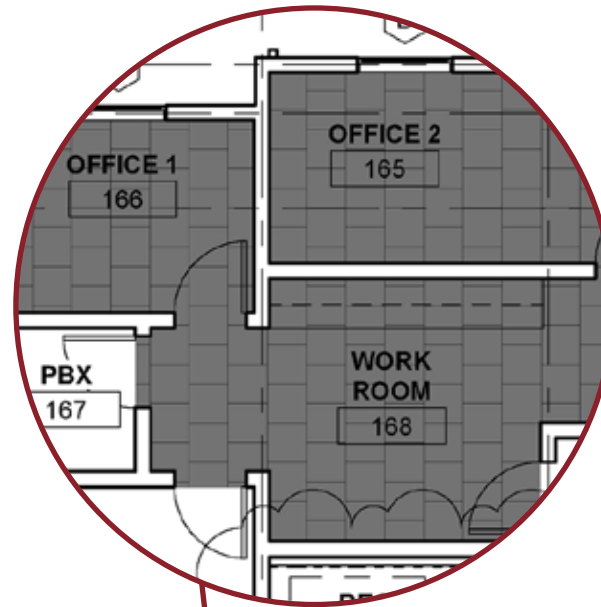


PRODUCT	ITEM#	COLOR#	SAMPLE#	SIZE	INSTALLATION
Custom	CPT-022	190739	269199-248	50 cm x 50 cm	Ashlar

INSTALLATION SPECIFICATIONS	DESCRIPTION
XL2000 PLUS Adhesive	Glue Down Install

## RISE & SHINE BACK OF HOUSE INSTALLATION PLAN

All quantities are estimates only and are based on plans provided. Site measurements and field verifications are recommended to ensure accuracy. These quantities are not intended to be used for material ordering purposes. Since waste factors may vary by installer, actual ordering quantities are the responsibility of your flooring contractor.



## LEGEND



**PRODUCT:** Custom  
**ITEM:** CPT-022  
**COLOR/SAMPLE:**  
190739\_269199-248  
**SIZE:** 50 cm x 50 cm  
**INSTALLED:** Ashlar

## RISE & SHINE LOBBY PROTOTYPE ORDER INFORMATION

Carpet tiles **SAVE APPROXIMATELY 18%-20% IN PRODUCT WASTE** verses broadloom, based on prototype layout.



PRODUCT	ITEM#	COLOR#	SIZE	INSTALLATION
<b>A</b> LVT Textured Woodgrains (City Scheme)	LVT-002A	A00416 Antique Dark Oak	25cm x 1m	Ashlar
<b>B</b> LVT Textured Woodgrains (Sun Scheme)	LVT-002C	A00416 Antique Dark Oak	25cm x 1m	Ashlar
<b>C</b> LVT Natural Woodgrains (Sea Scheme)	LVT-002B	A00208 Sand Dune	25cm x 1m	Ashlar

INSTALLATION SPECIFICATIONS	DESCRIPTION
XL2000 PLUS Adhesive	Glue Down Install



## RISE & SHINE LOBBY INSTALLATION PLAN

All quantities are estimates only and are based on plans provided. Site measurements and field verifications are recommended to ensure accuracy. These quantities are not intended to be used for material ordering purposes. Since waste factors may vary by installer, actual ordering quantities are the responsibility of your flooring contractor.



## LEGEND

**A**



**PRODUCT:**  
LVT Textured Woodgrains  
**ITEM:** LVT-002A  
**COLOR:**  
A00416 Antique Dark Oak  
**SIZE:** 25 cm x 1 m  
**INSTALLED:** Ashlar

**B**



**PRODUCT:**  
LVT Textured Woodgrains  
**ITEM:** LVT-002C  
**COLOR:**  
A00416 Antique Dark Oak  
**SIZE:** 25 cm x 1 m  
**INSTALLED:** Ashlar

**C**



**PRODUCT:**  
LVT Natural Woodgrains  
**ITEM:** LVT-002B  
**COLOR:**  
A00208 Sand Dune  
**SIZE:** 25 cm x 1 m  
**INSTALLED:** Ashlar