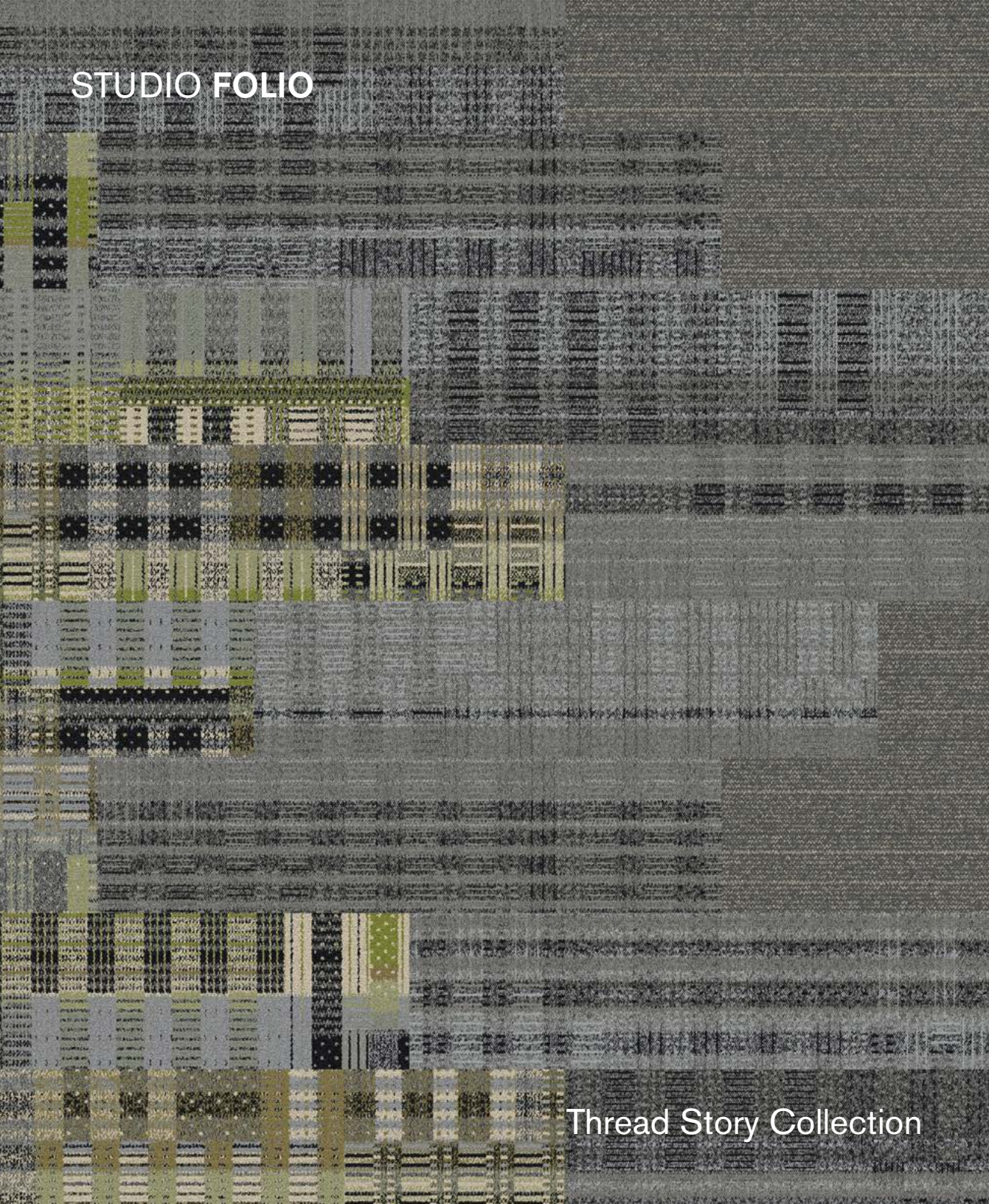


STUDIO FOLIO



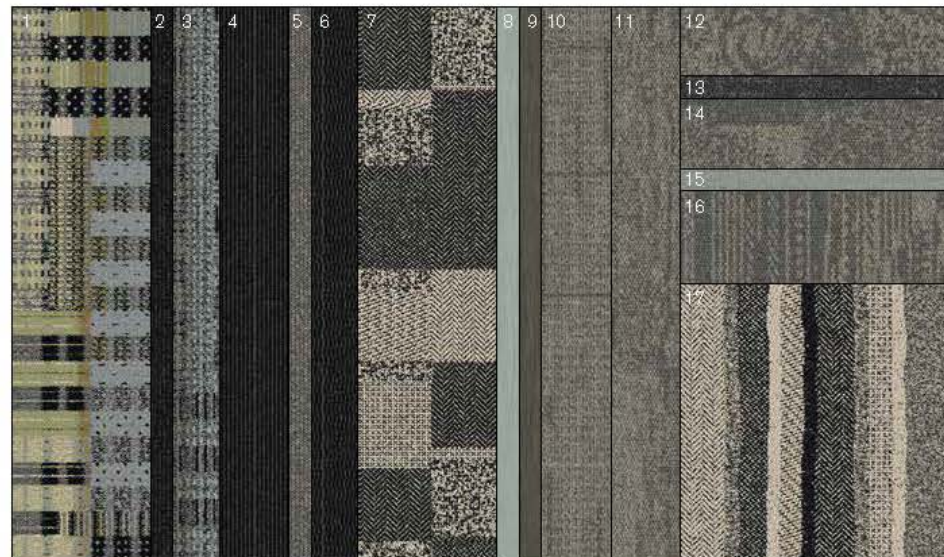
Thread Story Collection

Interface® Hospitality

FOLIO: Interface Design Studio has created a group of supplementary assets that show our newest products in a variety of spaces representing every segment, as well as demonstrate both aspirational design capabilities or practical application in any space—all driven by our launch palettes. Also included is a color placement guide, which shows the position and percentage of hues of each product colorway—serving as a quick and helpful visual reference for customizing color.

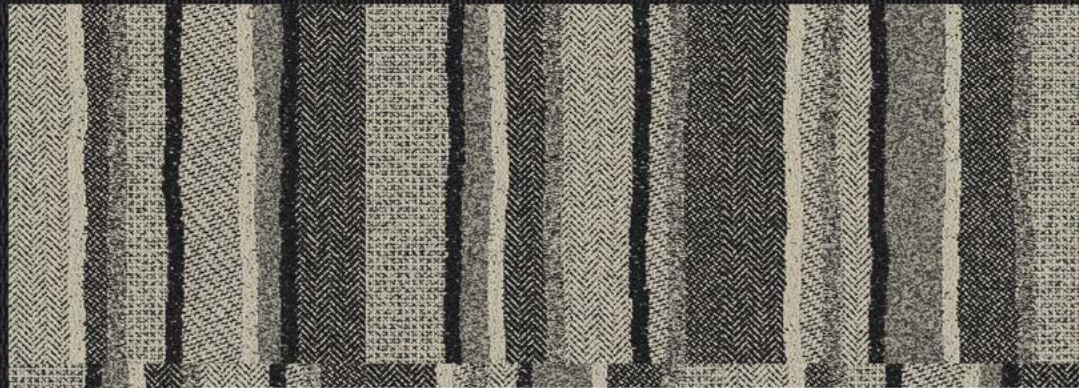
THREAD STORY COLLECTION

Product Launch Palette, including Open Air - Meadow



- 1) Social Fabric: Meadow 106782, 2) Drawn Thread: Slate Twill 106803, 3) Loom of Life: Slate Flint 106786,
- 4) Yesterweave: Slate Warp 106795, 5) Drawn Thread: Flint Twill 106804, 6) Tangled & Taut: Slate Rib 106811,
- 7) Future Woven: Flint 106790, 8) Brushed Lines: Celadon A01618, 9) Brushed Lines: Soft Shadow A01612,
- 10) Open Air 401: Nickel 106777, 11) Open Air 402: Nickel 106741, 12) Open Air 405: Nickel 106759,
- 13) Step it Up: Coal 106335, 14) Open Air 404: Nickel 106750, 15) Monochrome: Morning Haze 101843,
- 16) Open Air 403: Nickel 106732, 17) FLOR Straight Laced: Flint

PANTONE COLOR ACCENTS: HEXACHROME BLACK, COOL GRAY 10C, COOL GRAY 5C, 618C, 5585C



**Interface** *Hospitality*

**FLOR PRODUCT** STRAIGHTED LACED  
**COLOR** 106561 FLINT  
**SIZE** 50cm  
**INSTALLED** MONOLITHIC  
**PRODUCT** TANGLED AND TAUT  
**COLOR** 106811 SLATE RIB  
**SIZE** 25cm x 1m  
**INSTALLED** ASHLAR

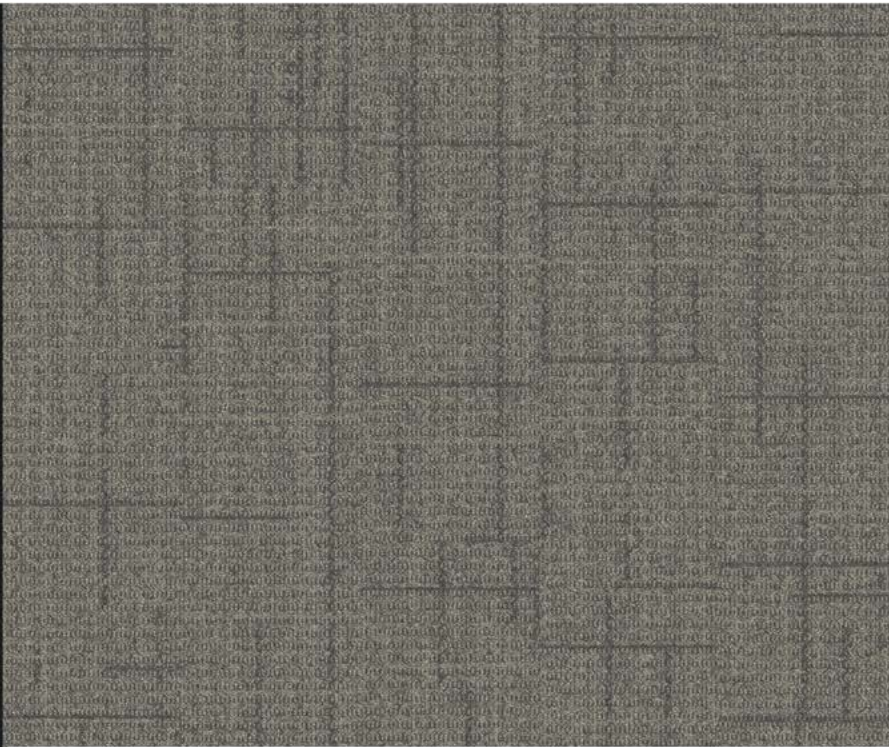


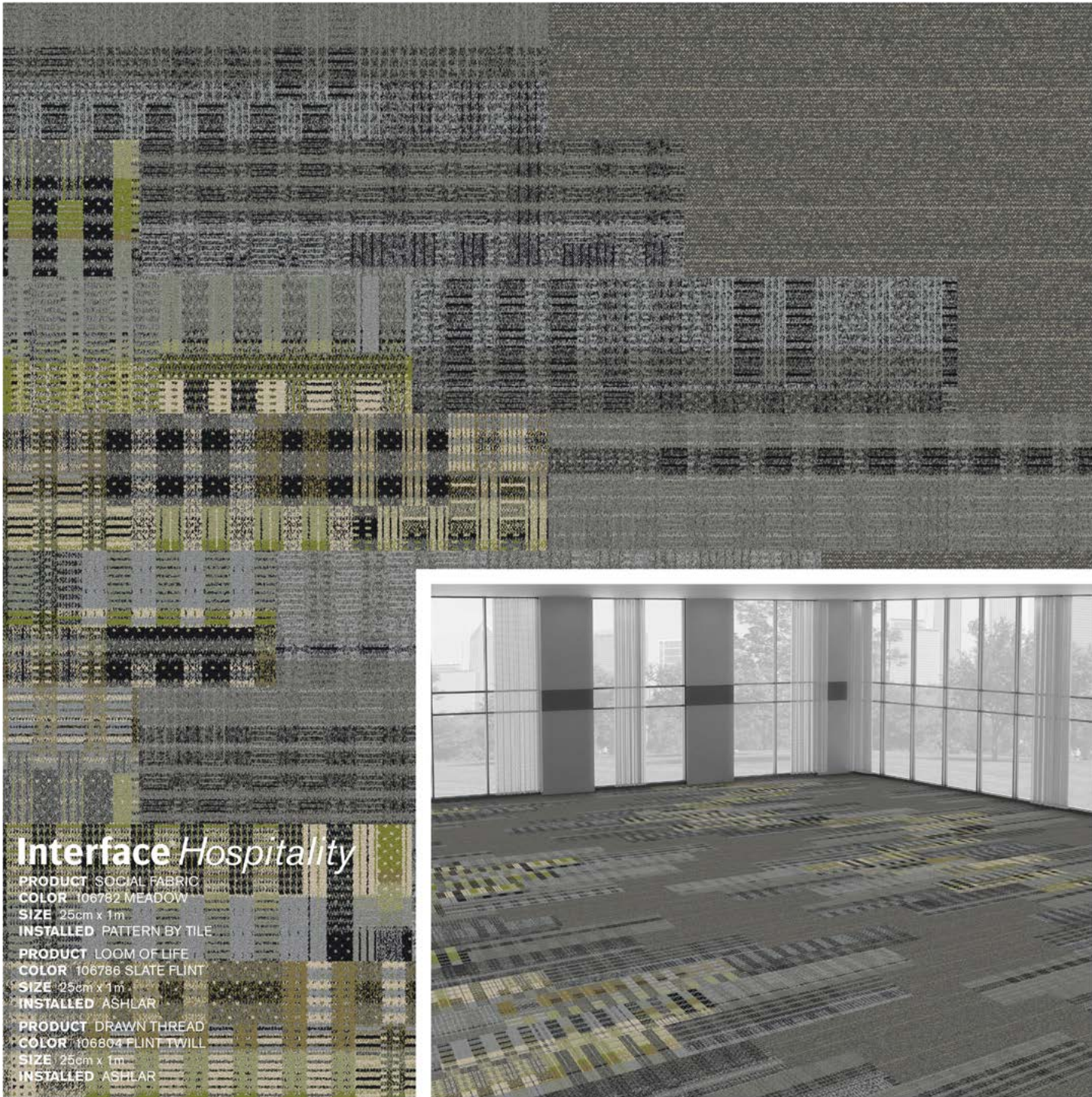
## Interface Hospitality

**PRODUCT** FUTURE WOVEN  
**COLOR** 106799 FLINT  
**SIZE** 25cm x 1m  
**INSTALLED** ASHLAR

**PRODUCT** YESTERWEAVE  
**COLOR** 106795 SLATE WARE  
**SIZE** 25cm x 1m  
**INSTALLED** ASHLAR

**PRODUCT** OPEN AIR 401  
**COLOR** 106777 NICKEL  
**SIZE** 25cm x 1m  
**INSTALLED** ASHLAR



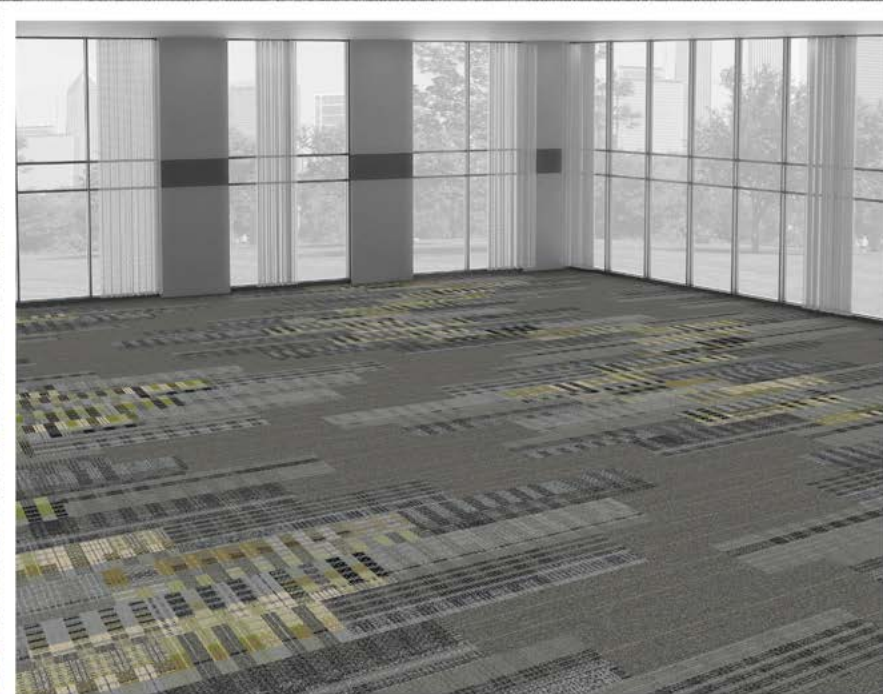


## Interface Hospitality

**PRODUCT** SOCIAL FABRIC  
**COLOR** 106782 MEADOW  
**SIZE** 25cm x 1m  
**INSTALLED** PATTERN BY TILE

**PRODUCT** LOOM OF LIFE  
**COLOR** 106786 SLATE FLINT  
**SIZE** 25cm x 1m  
**INSTALLED** ASHLAR

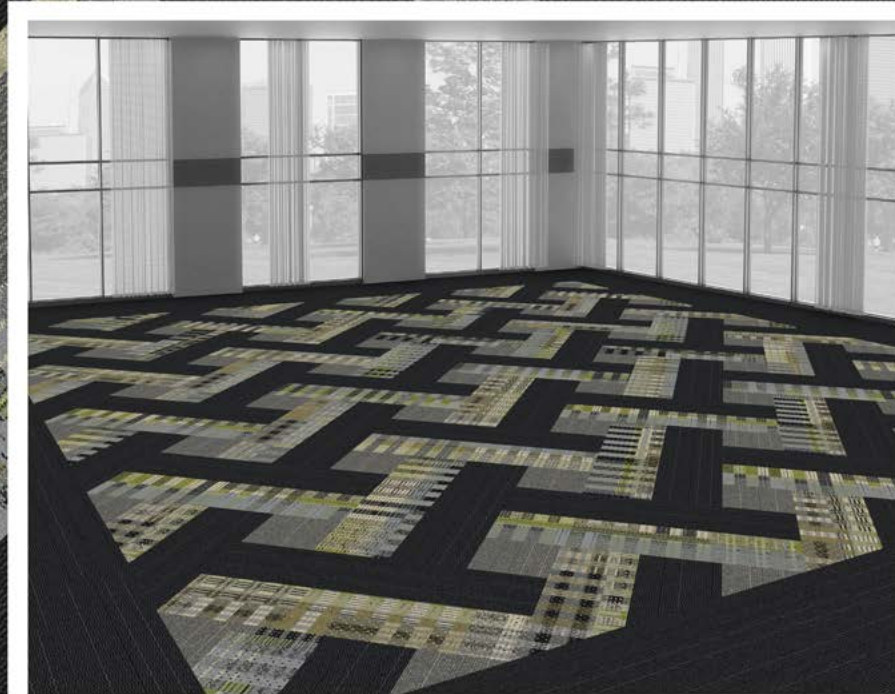
**PRODUCT** DRAWN THREAD  
**COLOR** 106804 FLINT TWILL  
**SIZE** 25cm x 1m  
**INSTALLED** ASHLAR





## Interface Hospitality

- PRODUCT** SOCIAL FABRIC
- COLOR** 106782 MEADOW
- SIZE** 25cm x 1m
- INSTALLED** PATTERN BY TILE
- PRODUCT** TANGLED AND TAUT
- COLOR** 106811 SLATE RIB
- SIZE** 25cm x 1m
- INSTALLED** ASHLAR, PATTERN BY TILE
- PRODUCT** DRAWN THREAD
- COLOR** 106804 FLINT TWILL
- SIZE** 25cm x 1m
- INSTALLED** PATTERN BY TILE





## Interface *Hospitality*

**PRODUCT** DRAWN THREAD

**COLOR** 106804 FLINT TWILL

**SIZE** 25cm x 1m

**INSTALLED** ASHLAR

**PRODUCT** LOOM OF LIFE

**COLOR** 106786 SLATE FLINT

**SIZE** 25cm x 1m

**INSTALLED** ASHLAR

**PRODUCT** TANGLED AND TAUT

**COLOR** 106811 SLATE RIB

**SIZE** 25cm x 1m

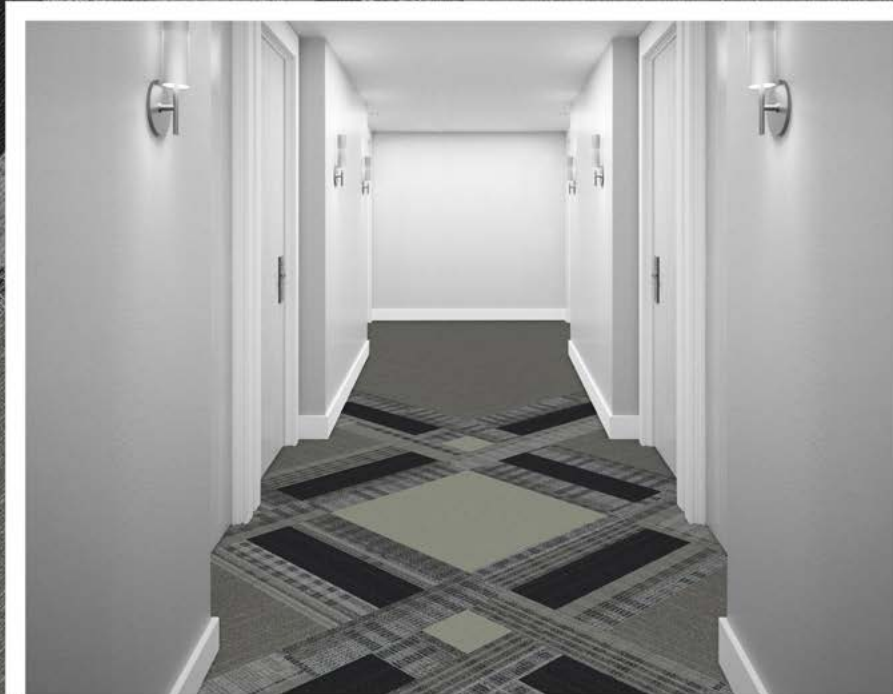
**INSTALLED** ASHLAR

**PRODUCT** MONOCHROME

**COLOR** 101843 MORNING HAZE

**SIZE** 50cm

**INSTALLED** MONOLITHIC







**Interface** *Hospitality*

**PRODUCT** OPEN AIR 402

**COLOR** 106741 NICKEL

**SIZE** 25cm x 1m

**INSTALLED** ASHLAR

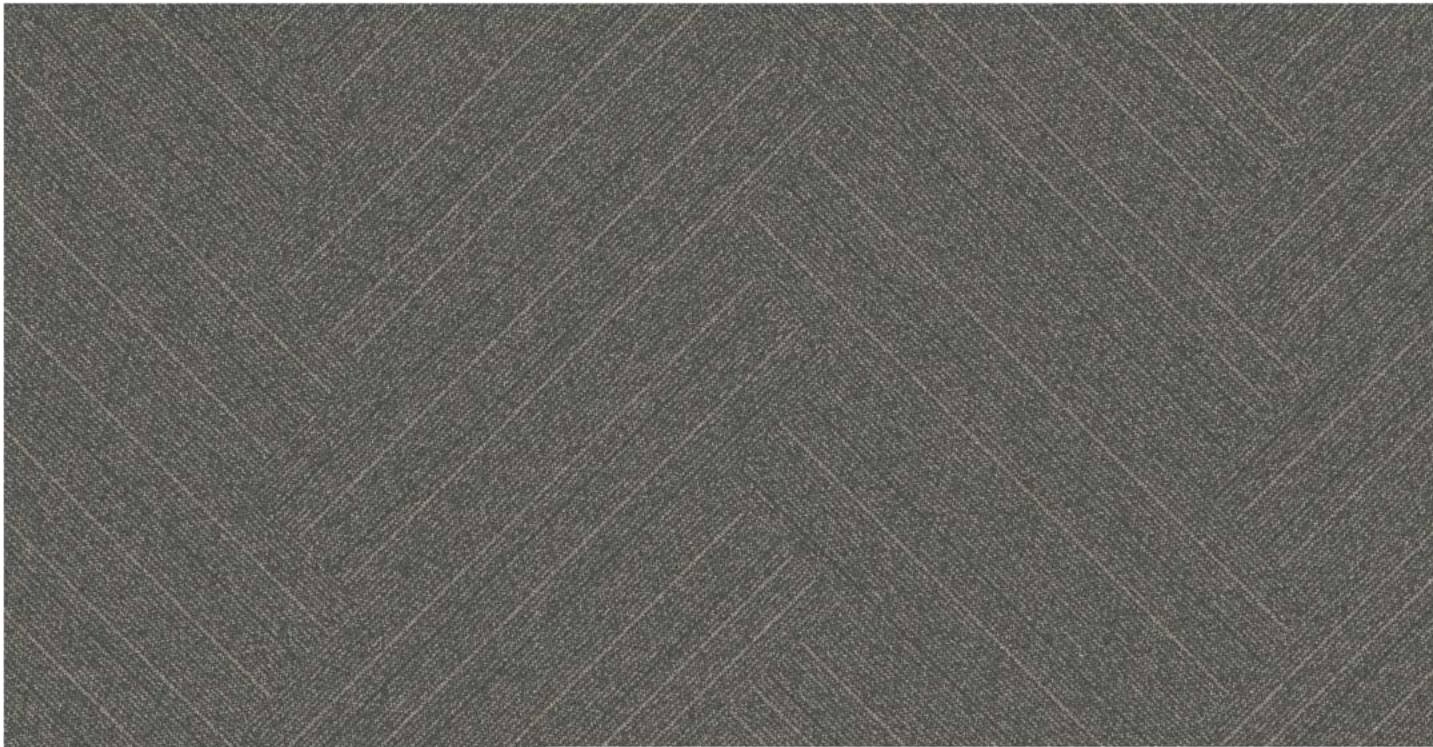
**PRODUCT** OPEN AIR 403

**COLOR** 106732 NICKEL

**SIZE** 50cm

**INSTALLED** NON DIRECTIONAL





**Interface** *Hospitality*

**PRODUCT** DRAWN THREAD  
**COLOR** 106804 FLINT TWILL  
**SIZE** 25cm x 1m  
**INSTALLED** HERRINGBONE



**Interface** *Hospitality*

**PRODUCT** OPEN AIR 405  
**COLOR** 106759 NICKEL  
**SIZE** 50cm  
**INSTALLED** NON DIRECTIONAL

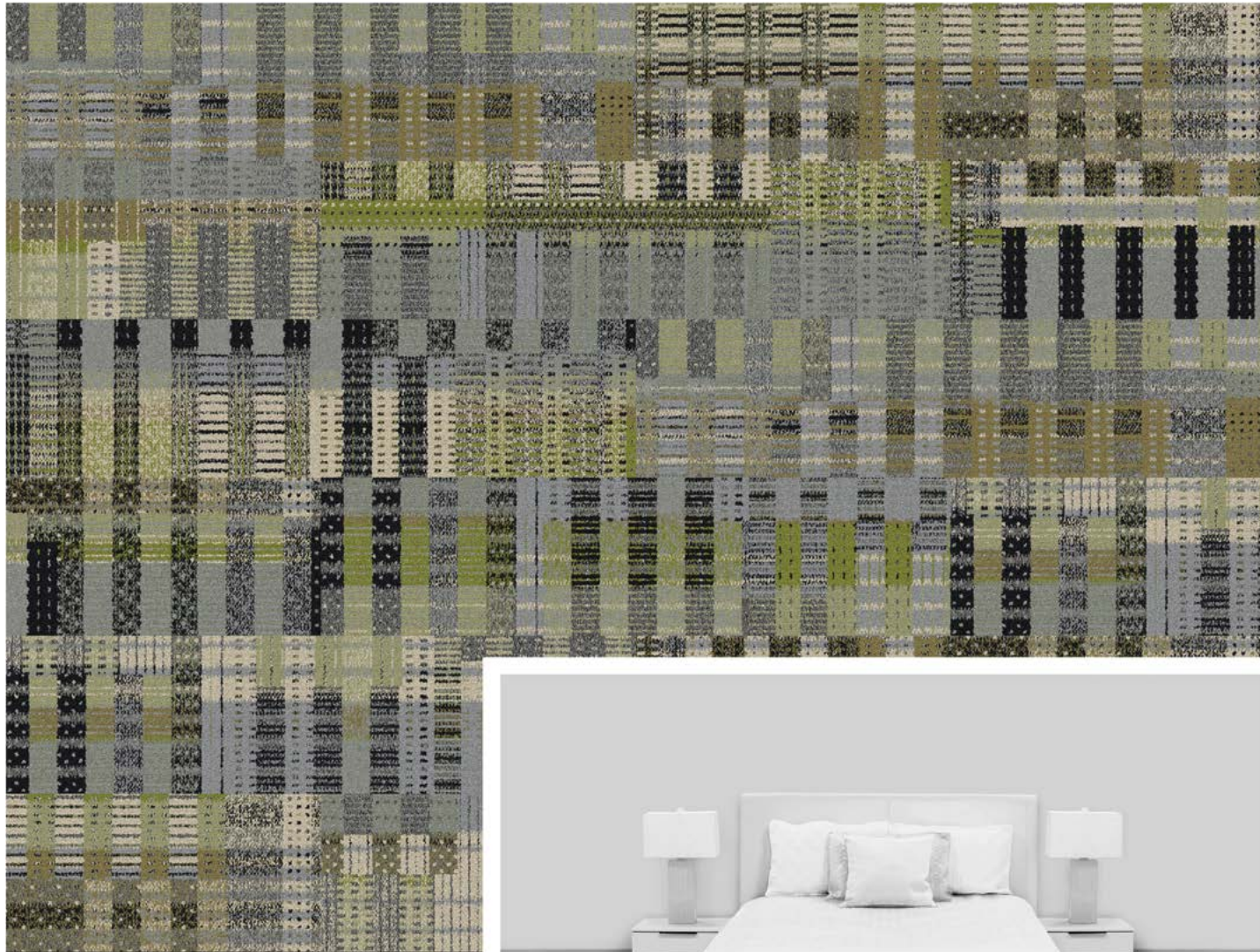


## Interface *Hospitality*

**PRODUCT** FUTURE WOVEN  
**COLOR** 106790 FLINT  
**SIZE** 25cm x 1m  
**INSTALLED** ASHLAR

**PRODUCT** DRAWN THREAD  
**COLOR** 106804 FLINT TWILL  
**SIZE** 25cm x 1m  
**INSTALLED** ASHLAR





## Interface® Hospitality

**PRODUCT** SOCIAL FABRIC

**COLOR** 106782 MEADOW

**SIZE** 25cm x 1m

**INSTALLED** ASHLAR

**LVT PRODUCT** BRUSHED LINES

**COLOR** A01612 SOFT SHADOW

**SIZE** 25cm x 1m

**INSTALLED** ASHLAR

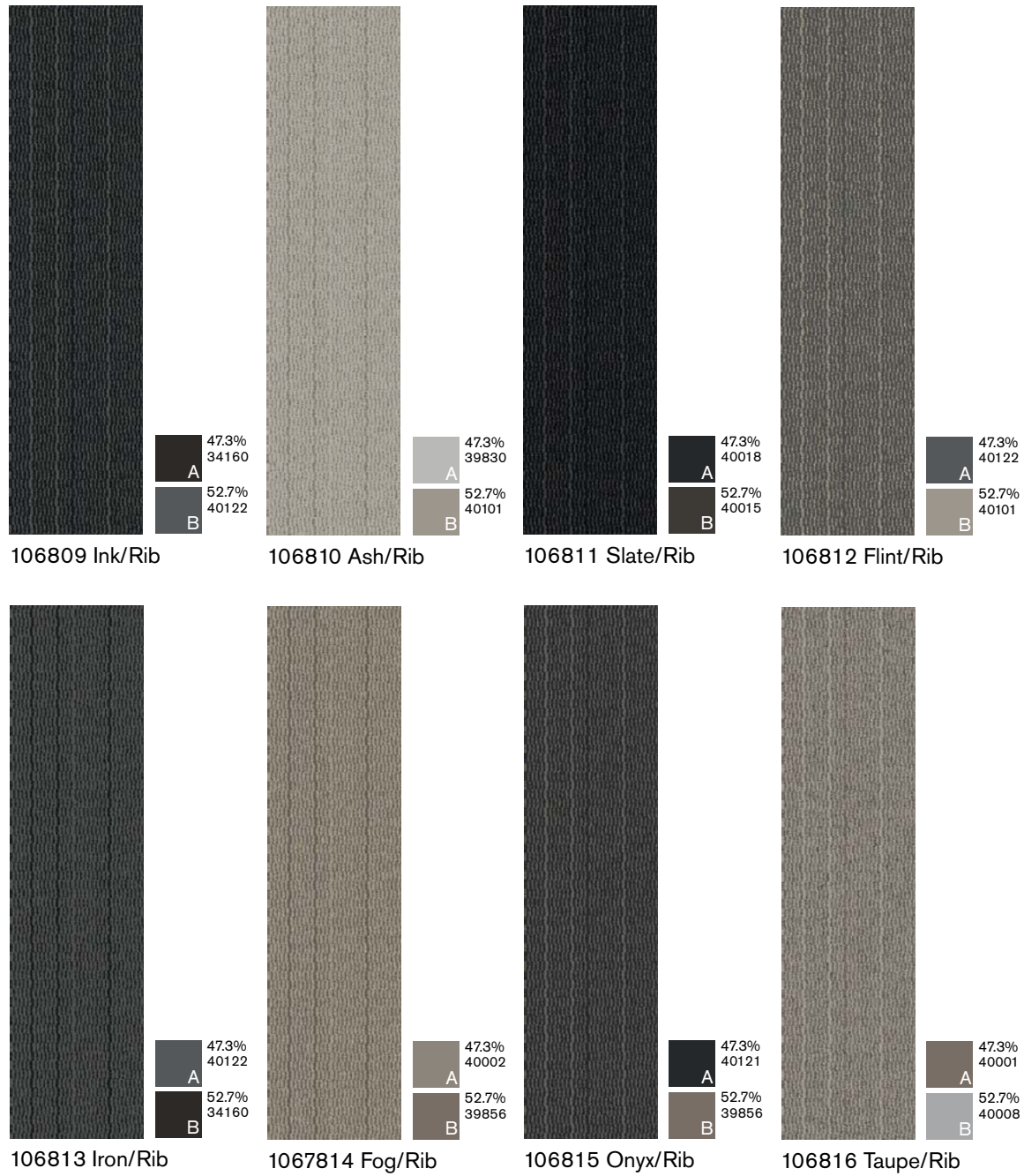


# Drawn Thread



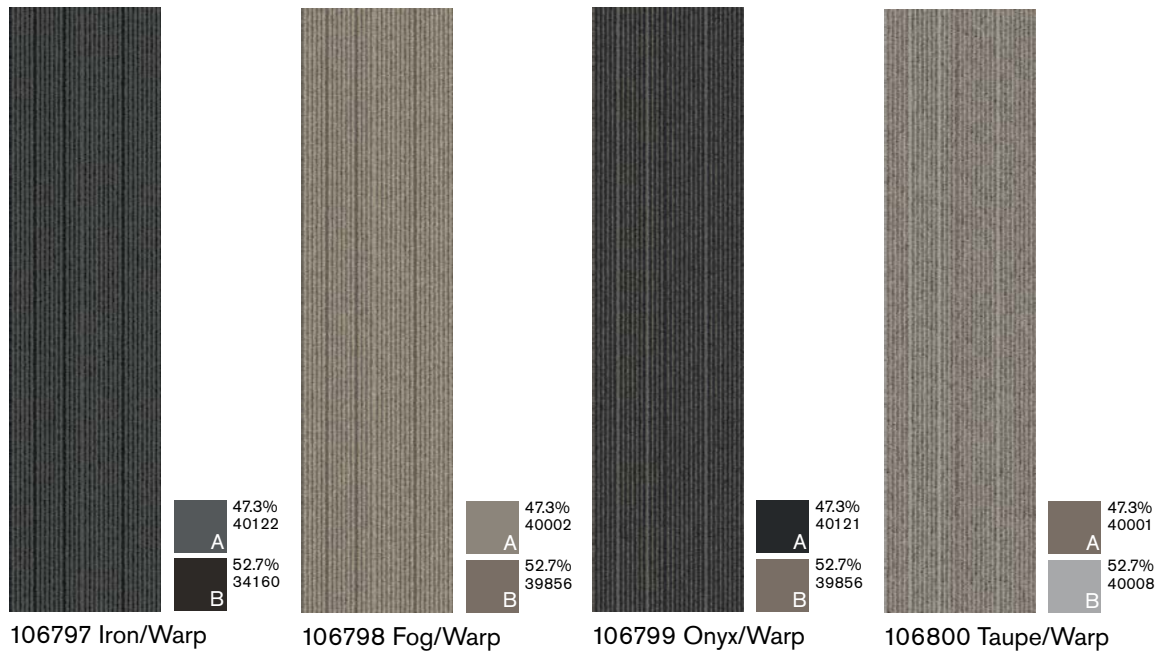
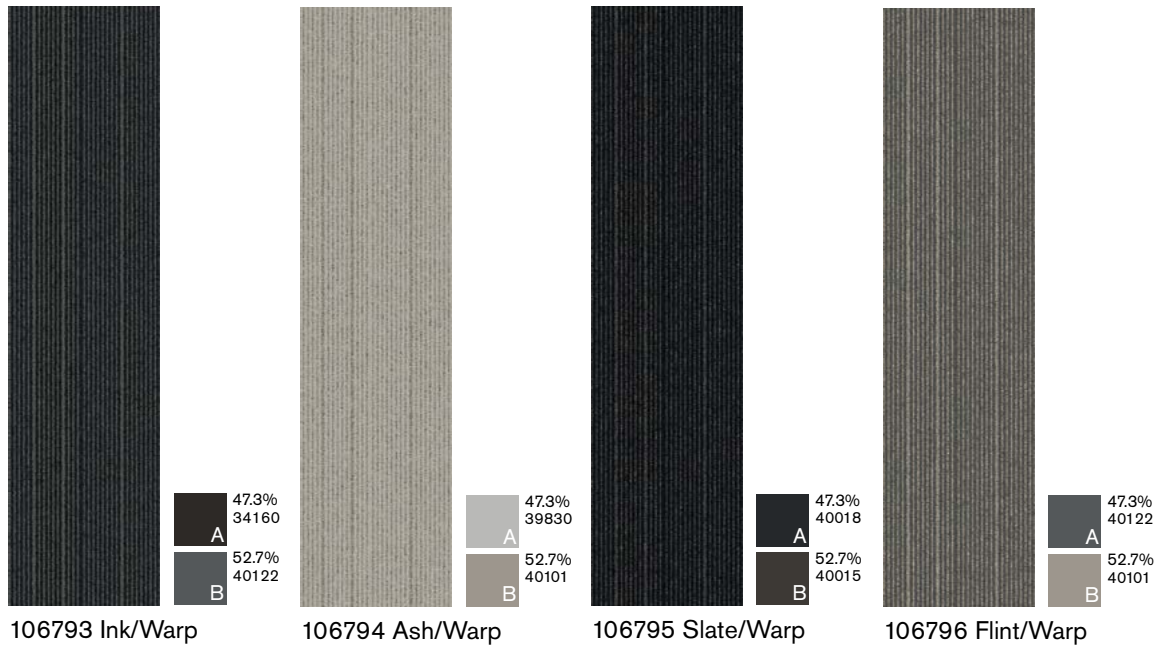
Interface® Hospitality

# Tangled & Taut



Interface® Hospitality

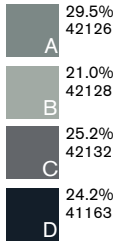
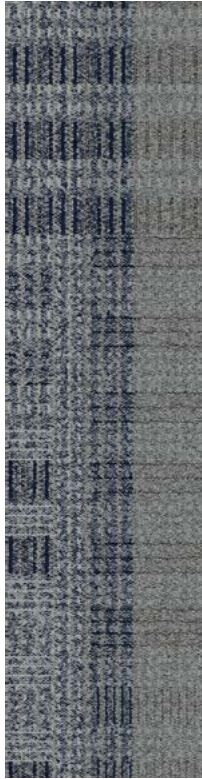
# YesterWeave



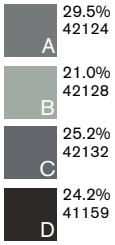
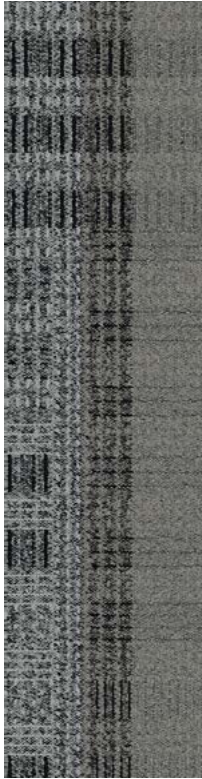
Interface® Hospitality



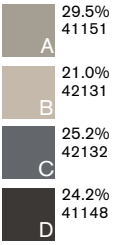
# Loom of Life



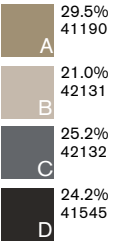
106785 Ink/Ash



106786 Slate/Flint



106787 Iron/Fog



106788 Onyx/Taupe

Interface Hospitality

# Social Fabric



106781 Aqua

A	20.3%	42126
B	14.2%	42131
C	19.1%	42132
D	14.9%	41163
E	7.6%	40208
F	6.6%	40210
G	8.9%	40151
H	8.4%	40204



106782 Meadow

A	20.3%	42126
B	14.2%	42131
C	19.1%	42132
D	14.9%	41159
E	7.6%	40153
F	6.6%	40829
G	8.9%	40180
H	8.4%	40146



106783 Sunset

A	20.3%	41151
B	14.2%	42131
C	19.1%	42132
D	14.9%	41545
E	7.6%	40041
F	6.6%	40200
G	8.9%	40153
H	8.4%	34473



106784 Spice

A	20.3%	41190
B	14.2%	42131
C	19.1%	42132
D	14.9%	41545
E	7.6%	40228
F	6.6%	35764
G	8.9%	39871
H	8.4%	40229

# Future Woven



50.0%  
A 40177  
50.0%  
B 40124

106789 Grey



50.0%  
A 40177  
50.0%  
B 34160

106790 Flint



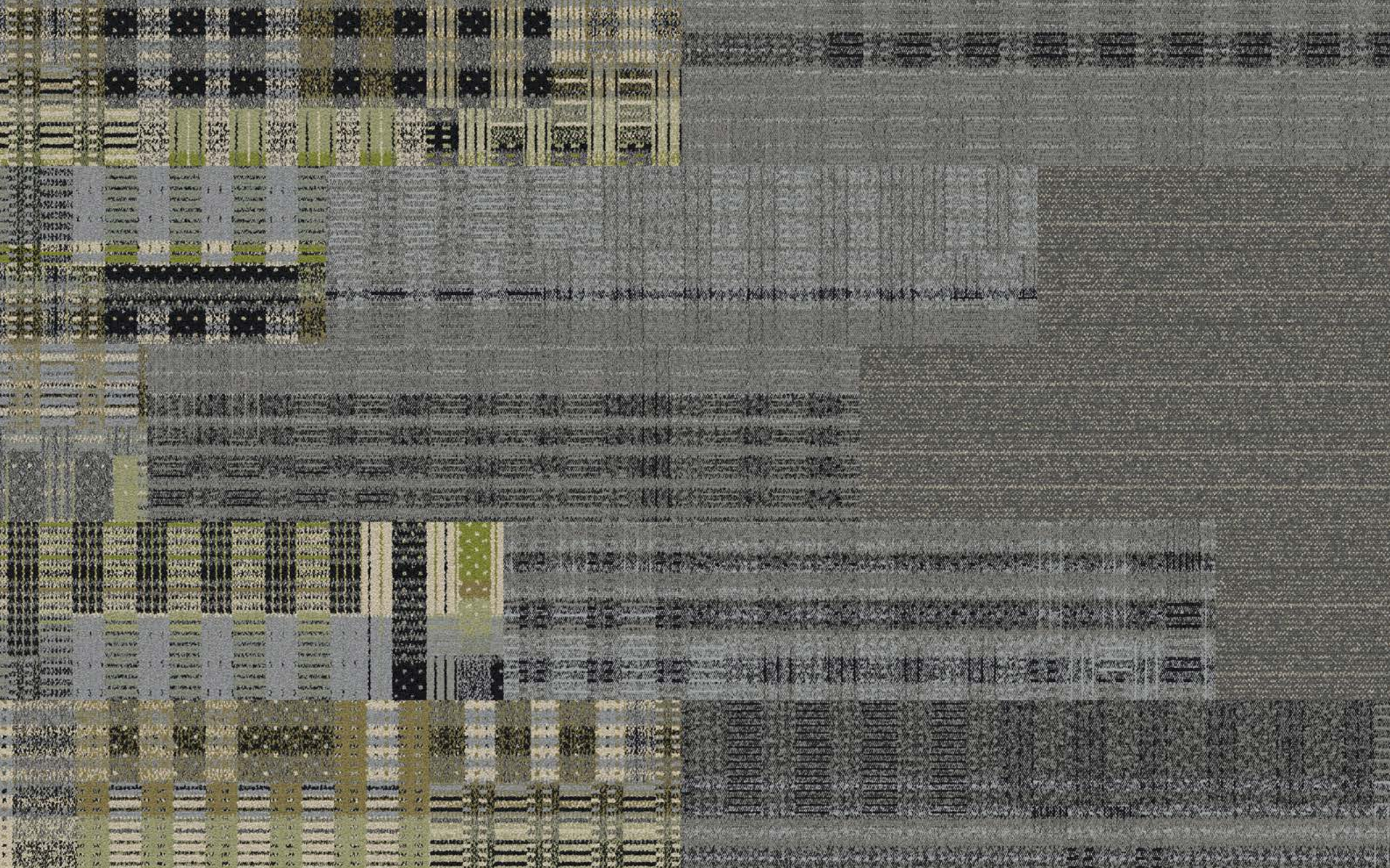
50.0%  
A 40177  
50.0%  
B 34168

106791 Mica



50.0%  
A 40177  
50.0%  
B 34370

106792 Fieldstone



**Interface Design Studio**  
interfacedesignstudio@interface.com  
office 706-812-6419