

www.interface.com

United States Headquarters

1503 Orchard Hill Road
LaGrange, GA 30240
1.800.336.0225 ext.56511

Canadian Headquarters

233 Lahr Drive
Belleville, ON K8N 5S2
1.800.267.2149 ext.52128

Brazilian Headquarters

Rua Surubim, 577 - Conjuntos
73/74 7º Andar
04571-050 - São Paulo - SP
+ 55 11 2196 0900

Latin American Headquarters

Montes Urales # 415 Piso 6
Col. Lomas de Chapultepec
México City, D.F. 11000
Mexico
+ 52 55 6395 5100

CIM # IFS00797 02/2018



Mission Zero®
our promise to eliminate any
negative impact our company
may have on the environment
by the year 2020.

Let It Bee Collection



Interface®

Let It Bee™ Collection

Inspired by the universally familiar and totally magical Arabic designs, Let It Bee is like an algorithm for the floor—solving for scale, shape, form, pattern, variety, movement, texture and color—all in one.

Honey Do™, Honey Don't™, and Bee's Knees™ each stand alone to enliven a space with a rhythm of tessellating forms. But these three patterns also build upon one another, working together to create a varied floorscape with a united color palette that is equal parts warm neutrals, cool neutrals and vibrant colors.

Let It Bee Collection is part of our i2® product family with benefits like mergeable dye lots that make selective replacement easy. This is just one of the many steps we take toward creating a climate fit for life. Join the #ClimateTakeBack movement.





CARPET PRODUCT HONEY DO COLOR 105669 MORNING MIST **INSTALLED BRICK**
LVT PRODUCT STUDIO SET COLOR A00706 MUSHROOM **INSTALLED ASHLAR**



CARPET PRODUCT HONEY DON'T COLOR 105686 MORNING MIST **INSTALLED BRICK**
LVT PRODUCT STUDIO SET COLOR A00706 MUSHROOM **INSTALLED ASHLAR**



CARPET PRODUCT HONEY DO COLOR 105669 MORNING MIST
CARPET PRODUCT HONEY DON'T COLOR 105686 MORNING MIST
CARPET PRODUCT BEE'S KNEES COLOR 105660 MORNING MIST **INSTALLED PATTERN BY**
TILE LVT PRODUCT STUDIO SET COLOR A00706 MUSHROOM **INSTALLED ASHLAR**



Honey Do™ Colorline



105669 MORNING MIST



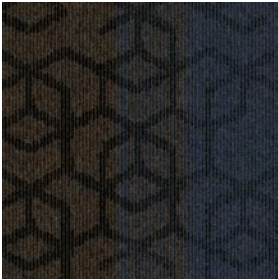
105670 DAYLIGHT



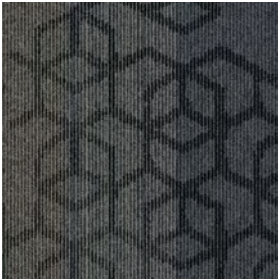
105671 DESERT SHADOW



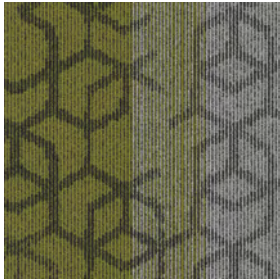
105672 FAWN



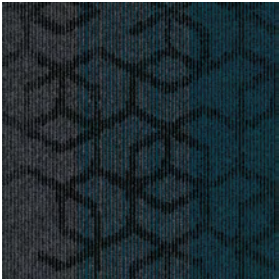
105673 EVENING DUSK



105674 ECLIPSE



105675 DEW



105676 DARK OCEAN

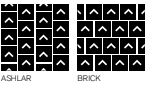


105677 TWILIGHT

Specifications



Modular, 50cm x 50cm	1472702500
Backing System	GlasBac® Tile
Yarn Manufacturer	Universal
Yarn System	Post-Consumer Content Type 6,6 Nylon
Color System	100% Solution Dyed
Construction	Tufted Textured Loop
Preservative Protection	Intersept®
Soil/Stain Protection	Protekt ² ®
Pile Thickness	0.095 in., 2.4 mm
Pile Density	6,821
Total Recycled Content	62%-67%
Indoor Air Quality	CRI Green Label Plus #GLP0820





Honey Don't™ Colorline



105686 MORNING MIST



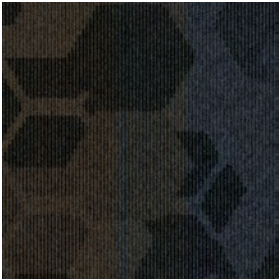
105687 DAYLIGHT



105688 DESERT SHADOW



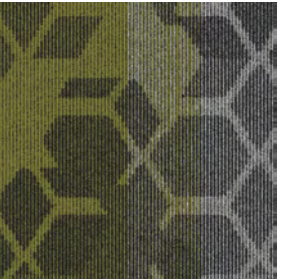
105689 FAWN



105690 EVENING DUSK



105691 ECLIPSE



105692 DEW



105693 DARK OCEAN



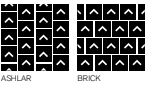
105694 TWILIGHT

Specifications



Modular, 50cm x 50cm
Backing System
Yarn Manufacturer
Yarn System
Color System
Construction
Preservative Protection
Soil/Stain Protection
Pile Thickness
Pile Density
Total Recycled Content
Indoor Air Quality

1472802500
GlasBac® Tile
Universal
Post-Consumer Content Type 6,6 Nylon
100% Solution Dyed
Tufted Textured Loop
Intersept®
Protekt²®
0.093 in., 2.4 mm
6,968
62%-67%
CRI Green Label Plus #GLP0820





Bee's Knees™ Colorline



105660 MORNING MIST



105661 DAYLIGHT



105662 DESERT SHADOW



105663 FAWN



105664 EVENING DUSK



105665 ECLIPSE



105666 DEW



105667 DARK OCEAN



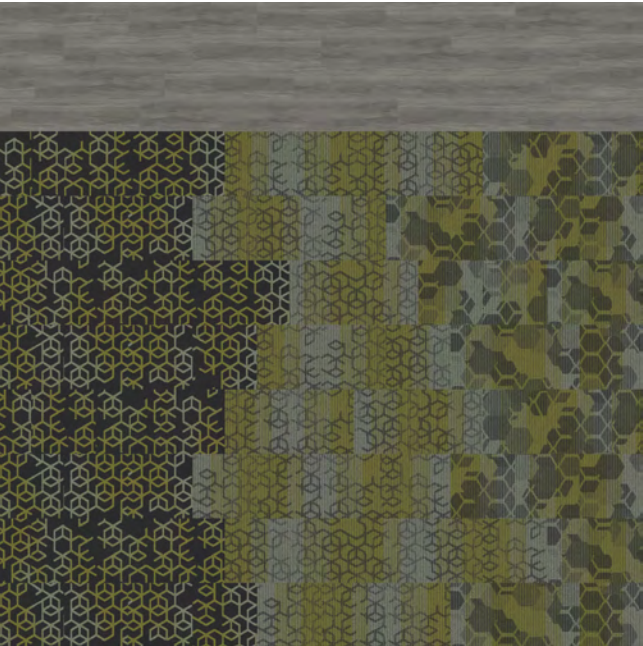
105668 TWILIGHT

Specifications

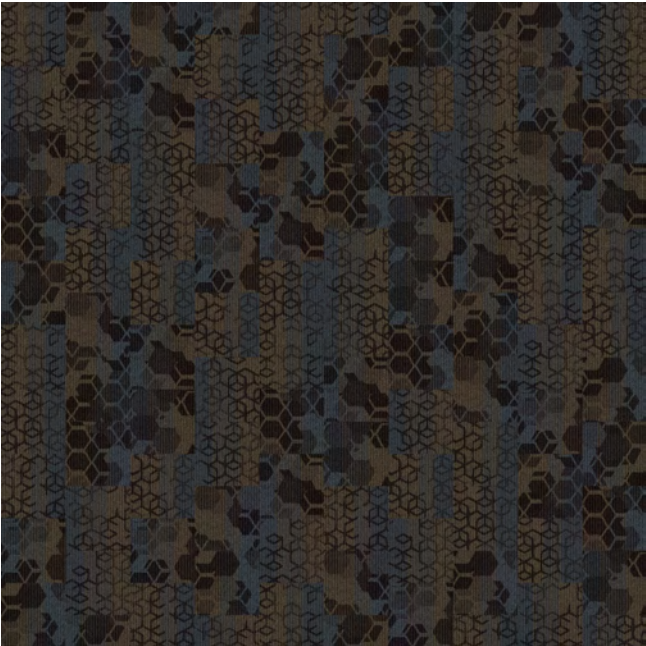
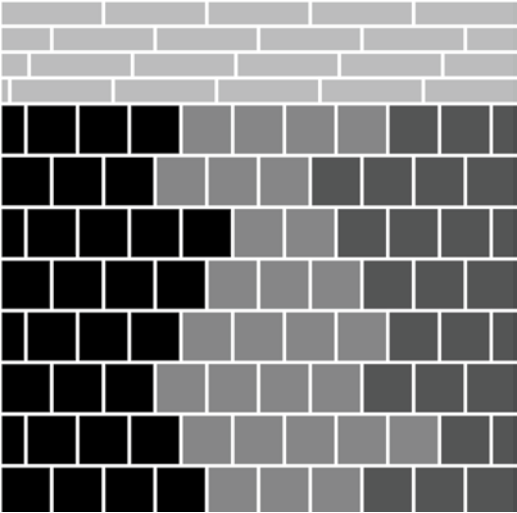
Modular, 50cm x 50cm	1427402500
Backing System	GlasBac® Tile
Yarn Manufacturer	Universal
Yarn System	Post-Consumer Content Type 6,6 Nylon
Color System	100% Solution Dyed
Construction	Tufted Pattern Loop
Preservative Protection	Intersept®
Soil/Stain Protection	Protekt ² ®
Pile Thickness	0.168 in., 4.3 mm
Pile Density	5,357
Total Recycled Content	61%-68%
Indoor Air Quality	CRI Green Label Plus #GLP0820



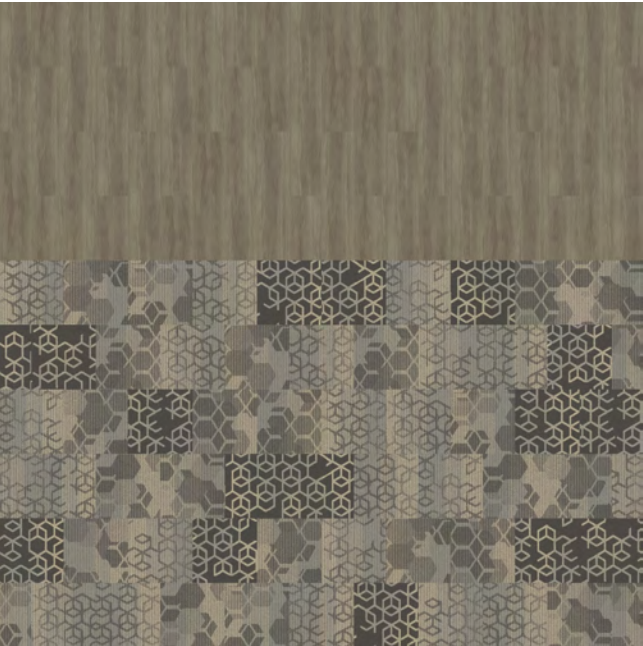
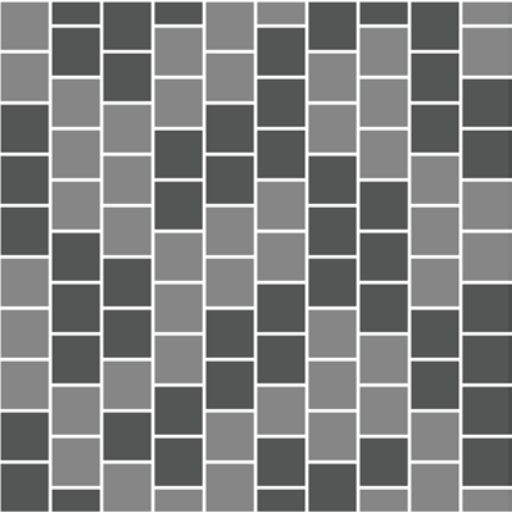
Design Ideas Below are floor layouts showing how to create the design ideas shared in several of the images featured in this brochure.



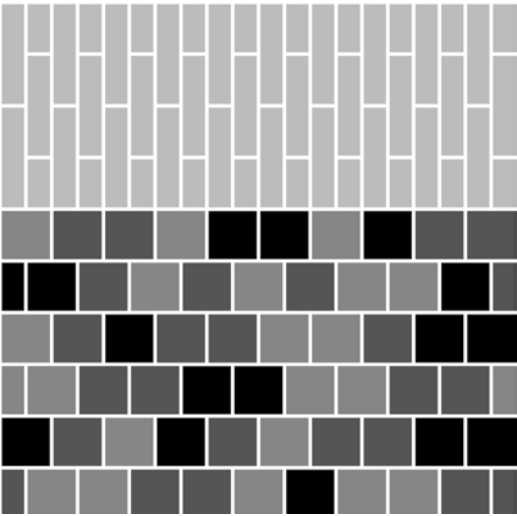
CARPET PRODUCT HONEY DO **COLOR** 105675 DEW **CARPET PRODUCT** HONEY DON'T
COLOR 105692 DEW **CARPET PRODUCT** BEE'S KNEES **COLOR** 105666 DEW **INSTALLED** PATTERN BY TILE (BRICK)
LVT PRODUCT STUDIO SET **COLOR** A00702 PEWTER **INSTALLED** ASHLAR



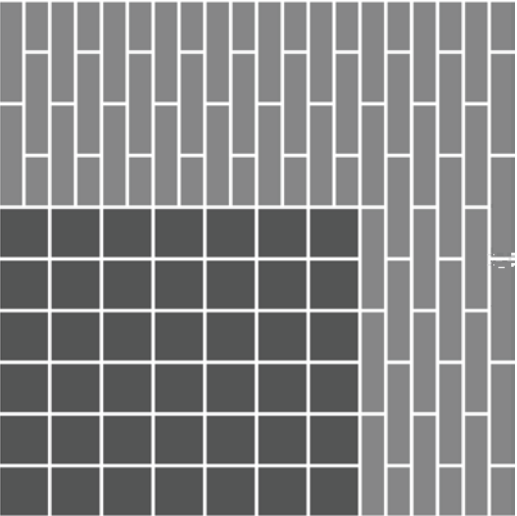
PRODUCT HONEY DO **COLOR** 105673 EVENING DUSK **PRODUCT** HONEY DON'T
COLOR 105690 EVENING DUSK **INSTALLED** PATTERN BY TILE (ASHLAR)



CARPET PRODUCT HONEY DO **COLOR** 105669 MORNING MIST
CARPET PRODUCT HONEY DON'T **COLOR** 105686 MORNING MIST
CARPET PRODUCT BEE'S KNEES **COLOR** 105660 MORNING MIST **INSTALLED** PATTERN BY TILE (BRICK)
LVT PRODUCT STUDIO SET **COLOR** A00706 MUSHROOM **INSTALLED** ASHLAR



CARPET PRODUCT BEE'S KNEES **COLOR** 105662 DESERT SHADOW **INSTALLED** NON DIRECTIONAL
LVT PRODUCT STUDIO SET **COLOR** A00706 MUSHROOM **INSTALLED** ASHLAR





i2[®] is undoubtedly one of our smartest and simplest innovations yet. It's smart because its mergeable dye lots minimize the need for attic stock and make selective replacement seamless.

And simple? We took our cue from nature, which designs organically without matching patterns or colors. Think of a natural forest and the various species of trees--different shapes, different colors, but still beautiful. Likewise, our i2 tiles vary in shape and color within one style and colorway so they blend, not match. Tiles work together even when purchased years apart. What a simple concept and a smart investment for your floor!

All product specifications reflect averages derived from product sample testing, are subject to normal manufacturing and testing tolerances and inherent pattern variances, and may be changed without notice. For more information about these and other important attributes of the product(s) described herein, including recycled content and product warranty information, please see www.interface.com/disclaimer.



Why Our Modular Carpet?



Modular Carpet Tile

Performance and Flexibility. Interface's standard backing systems set the industry standard for modular performance. Tiles stay on the floor with no upcurl, no tapping and no rippling effect, yet are easy to selectively replace. Our modular carpet is also easier to handle, install and maintain than bulky roll carpet. And, it installs with less waste so you save time and money.



Cool Floor™

The Low Carbon Option. Help stop climate change. ALL Interface modular flooring sold in North America is third party verified climate neutral Cool Floor. We start by using low-carbon materials and manufacturing processes, then Cool Floor zeros out all remaining greenhouse gas (GHG) emissions associated with the entire life cycle of your flooring, from raw material extraction through use and recycling.



TacTiles®

No Glue Installation. Our revolutionary TacTiles installation system eliminates the need for glue, adhering tiles securely together to form a floor that "floats" for greater flexibility, easier replacement and long-term performance. The result? Less mess, less waste and virtually no VOCs, not to mention an environmental footprint that is over 90% lower than that of traditional glue adhesives.



Intersept®

Mold Protection. Our proprietary preservative, Intersept, protects our modular carpet against mold growth and odor-causing bacteria—guaranteed. Intersept treated carpet, with proper maintenance, shows no mold or bacterial growth when tested per the ASTM E2471 Standard Test Method. Intersept is EPA approved for safe use in carpet, water insoluble and contains no halogens, heavy metals, phenols or formaldehyde.



ReEntry®

Recyclable is Now a Reality. Through our ReEntry program and partnerships with our fiber suppliers and recycling centers throughout North America, separated Type 6 and 6,6 nylon are recycled into new 6 and 6,6 nylon while separated GlasBac®, GlasBacRE and similar competitor backings are recycled into new GlasBacRE non-virgin PVC backing using our Cool Blue™ technology. The result? Products with up to 89% total recycled content, including as much as 27% post-consumer content.



Sustainable Choice

Environmental Responsibility. More than 95% of Interface products manufactured in the Americas carry the GreenCircle Certified Environmental Facts label, which has verified that standard Interface products are manufactured using 99% renewable energy and offer a minimum of 66% and 80% total recycled content when backed with GlasBac and GlasBacRE backing respectively. All Interface products include published HPDs (Health Product Declarations) or Declare Labels and more than 99% have a published EPD (Environmental Product Declaration) globally, and all products produced in the Americas are NSF/ANSI 140 gold or platinum certified.

Third Party Certification

cool floor™

Cool Floor – Our third party verified carbon offset program zeroes out all greenhouse gas (GHG) emissions associated with the entire life cycle of your flooring.



Environmental Product Declaration (EPD) – A statement of product ingredients and environmental impacts over the entire life cycle of a product. A comprehensive life cycle assessment (LCA) is performed to ISO standards to develop an EPD, after which both the EPD and LCA must be third party verified.



Sustainable Assessment for Carpet – The only carpet sustainability standard in North America that evaluates the environmental impact of carpet for its entire lifecycle.



CRI Green Label Plus – An independent testing program that identifies carpet and adhesives with very low emissions of VOCs to help improve indoor air quality.