

[www.interface.com](http://www.interface.com)

**United States Headquarters**

1503 Orchard Hill Road  
LaGrange, GA 30240  
1.800.336.0225 ext.56511

**Canadian Headquarters**

233 Lahr Drive  
Belleville, ON K8N 5S2  
1.800.267.2149 ext.52128

**Brazilian Headquarters**

Rua Surubim, 577 - Conjuntos  
73/74 7º Andar  
04571-050 - São Paulo - SP  
+ 55 11 2196 0900

**Latin American Headquarters**

Montes Urales # 415 Piso 6  
Col. Lomas de Chapultepec  
México City, D.F. 11000  
Mexico  
+ 52 55 6395 5100

CIM # IFS00816 10/2018



Climate change is undeniable. And reversible. Our mission is to prove it.  
**Join the #ClimateTakeBack and help create a climate fit for life.**



**Interface®**



Honor Roll

Our four Honor Roll styles are high achievers with top marks in performance and sustainability. We've gathered three 50cm squares, Exposed™, Profile™ and Cubic™, and added new colors to help them pair with Verticals™, one of our Skinny Planks™.

Each one is part of our i2® product family, designed to eliminate any concerns with blending different dye lots or selective replacement.

**Exposed** offers a modeled look that captures the cool factor of stained concrete, but with softness and acoustical benefits that concrete can't match.

**Cubic** is the teacher's pet, a favorite for many years because of its proven performance and classic geometric pattern.

**Verticals** puts a new spin on this familiar geometry with its 25cm x 1m Skinny Planks format, introducing a number of design possibilities.

**Profile's** more subdued, yet non directional pattern makes it the perfect companion.

And like all our products around the world, these styles are carbon neutral . . . just a few of the steps we've taken on our path toward creating a climate fit for life. Join the **#ClimateTakeBack** movement.











CARPET PRODUCT PROFILE COLOR 106088 VERTEX INSTALLED NON DIRECTIONAL  
LVT PRODUCT STUDIO SET COLOR A00706 MUSHROOM INSTALLED ASHLAR

[www.interface.com](http://www.interface.com)



PRODUCT EXPOSED COLOR 106068 PRINCIPAL INSTALLED NON DIRECTIONAL



Exposed™ Colorline Each color is shown as a multi-tile grid (2 m x 2 m), non directional install.



106056 SOAR



106057 MERIDIAN



106058 PRINCIPAL



106059 PITCH

Specifications



Modular, 50cm x 50cm	1383202500
Backing System	GlasBac® Tile
Yarn Manufacturer	Aquafil
Yarn System	100% Recycled Content Type 6 Nylon
Color System	100% Solution Dyed
Construction	Tufted Tip-Sheared
Preservation Protection	Intersept®
Soil/Stain Protection	Protekt®
Pile Thickness	0.07 in., 1.8 mm
Pile Density	9,257
Total Recycled Content	71%
Indoor Air Quality	CRI Green Label Plus #GLP0820



NON DIRECTIONAL

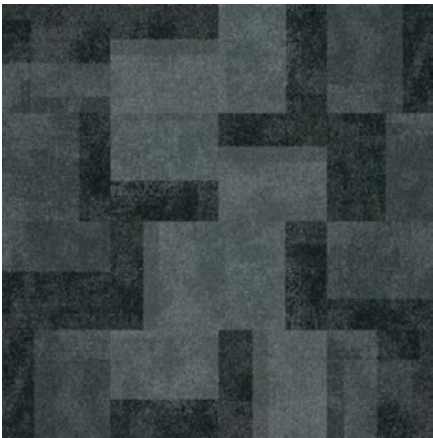


[www.interface.com](http://www.interface.com)

CARPET PRODUCT EXPOSED COLOR 106059 PITCH INSTALLED NON DIRECTIONAL  
LVT PRODUCT STUDIO SET COLOR A00713 SLATE INSTALLED ASHLAR



Exposed Colorline (Continued) Each color is shown as a multi-tile grid (2 m x 2 m), non directional install.



106060 ZENITH



106061 ALTITUDE



106064 VERTEX



106065 PEAK



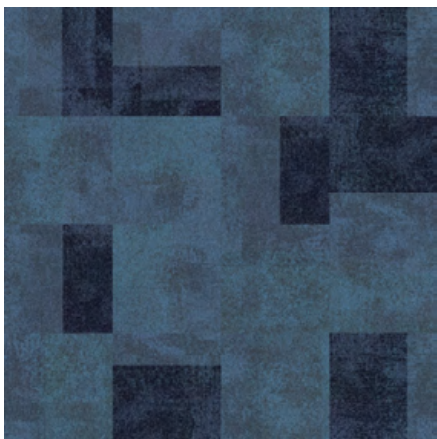
106062 LOFTY



106063 CREST



106066 SUMMIT



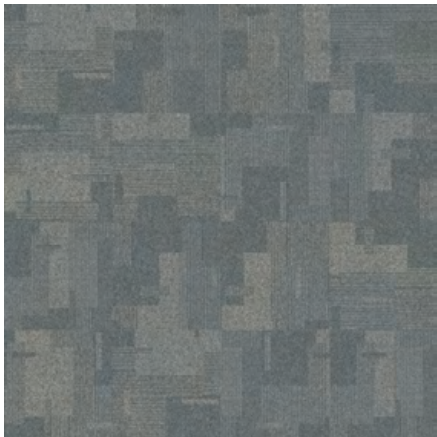
106067 PINNACLE



Cubic™ Colorline Each color is shown as a multi-tile grid (2 m x 2 m), non directional install.



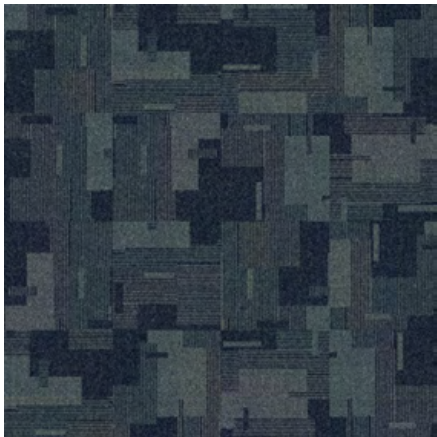
106068 SOAR



106069 MERIDIAN



106070 PRINCIPAL



106071 PITCH

Specifications



Modular, 50cm x 50cm	1380102500
Backing System	GlasBac® Tile
Yarn Manufacturer	Aquafil
Yarn System	100% Recycled Content Type 6 Nylon
Color System	100% Solution Dyed
Construction	Tufted Textured Loop
Preservation Protection	Intersept®
Soil/Stain Protection	Protekt®
Pile Thickness	0.093 in., 2.4 mm
Pile Density	6,968
Total Recycled Content	71%
Indoor Air Quality	CRI Green Label Plus #GLP0820



NON DIRECTIONAL

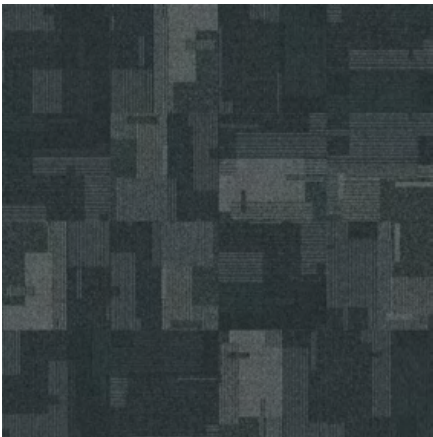


[www.interface.com](http://www.interface.com)

PRODUCT CUBIC COLOR 106073 ALTITUDE INSTALLED NON DIRECTIONAL



Cubic Colorline (Continued) Each color is shown as a multi-tile grid (2 m x 2 m), non directional install.



106072 ZENITH



106073 ALTITUDE



106076 VERTEX



106077 PEAK



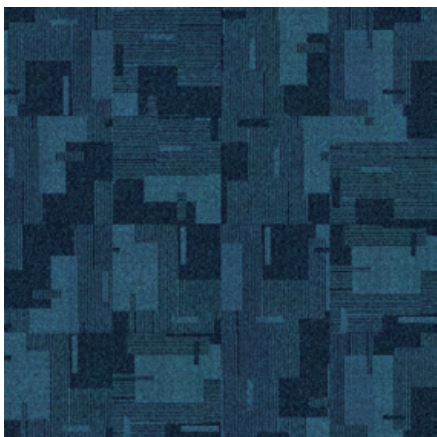
106074 LOFTY



106075 CREST



106078 SUMMIT



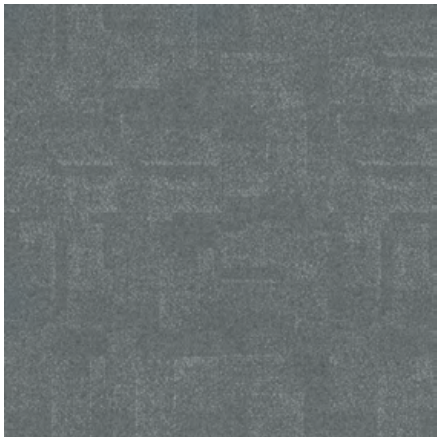
106079 PINNACLE



Profile™ Colorline Each color is shown as a multi-tile grid (2 m x 2 m), non directional install.



106080 SOAR



106081 MERIDIAN



106082 PRINCIPAL



106083 PITCH

Specifications



Modular, 50cm x 50cm	1381102500
Backing System	GlasBac® Tile
Yarn Manufacturer	Aquafil
Yarn System	100% Recycled Content Type 6 Nylon
Color System	100% Solution Dyed
Construction	Tufted Textured Loop
Preservation Protection	Intersept®
Soil/Stain Protection	Protekt®
Pile Thickness	0.116 in., 2.9 mm
Pile Density	5,586
Total Recycled Content	71%
Indoor Air Quality	CRI Green Label Plus #GLP0820

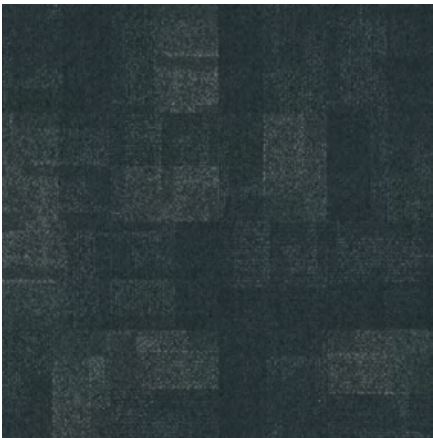


NON DIRECTIONAL





Profile Colorline (Continued) Each color is shown as a multi-tile grid (2 m x 2 m), non directional install.



106084 ZENITH



106085 ALTITUDE



106088 VERTEX



106089 PEAK



106086 LOFTY



106087 CREST



106090 SUMMIT



106091 PINNACLE



Verticals™ Colorline Each color is shown as a multi-tile grid (2 m x 2 m), ashlar install.



104011 SOAR



104010 MERIDIAN



104009 PRINCIPAL



103734 PITCH

Specifications



Modular, 25cm x 1m	138680AK00
Backing System	GlasBac® Tile
Yarn Manufacturer	Aquafil
Yarn System	100% Recycled Content Type 6 Nylon
Color System	100% Solution Dyed
Construction	Tufted Textured Loop
Preservation Protection	Intersept®
Soil/Stain Protection	Protekt®
Pile Thickness	0.12 in., 3 mm
Pile Density	4,500
Total Recycled Content	70%
Indoor Air Quality	CRI Green Label Plus #GLP0820





Verticals Colorline (Continued) Each color is shown as a multi-tile grid (2 m x 2 m), ashlar install.



104008 ZENITH



103743 ALTITUDE



104015 VERTEX



103741 PEAK



103742 LOFTY



103739 CREST



103735 SUMMIT



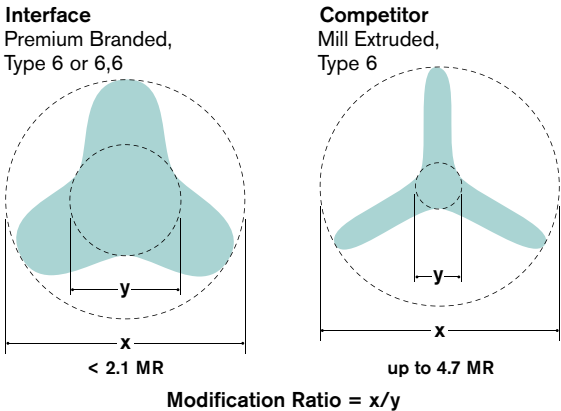
103736 PINNACLE



# Why Interface? | Performance

## Beauty That Lasts

**Fiber** We start with the best—commercial-grade, solution dyed fibers with a low modification ratio (MR). A lower MR means better performance. The result? High performance fibers that don't fade or bleach out.



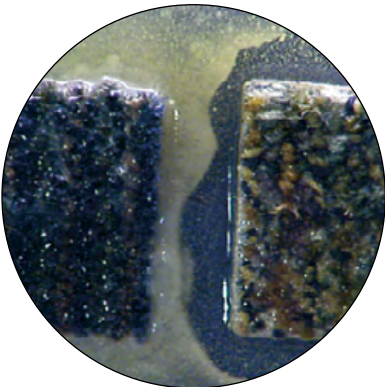
## Passing the Test

Industry standard wear tests just aren't tough enough. So, we developed our own—the **Appearance Retention Test (ART)**. ART considers real-world conditions—wear, soiling and maintenance—for up to 20-year increments. If an Interface style doesn't pass, we won't launch it.



## Breathe Easier

**Intersept®** Only Interface carpet tiles feature Intersept, our safe and effective preservative that protects against odor-causing micro-organisms. It's built into the backing system, so it won't wear off or wash away.



[interface.com/intersept](https://www.interface.com/intersept)

## Maintenance Made Easy

[interface.com/maintenance](https://www.interface.com/maintenance)

Simple vacuuming, spot cleaning and routine deep cleaning are all you need—no special equipment or cleaning solutions.



## Inspired by Nature

[interface.com/i2](https://www.interface.com/i2)

**i2®** Nature doesn't design with perfectly matched materials, so why should we? Our i2 products are made to blend, not match. That means no dye lot concerns, so you order what you need when you need it. Bonus: Many i2 styles install with as little as 1.5% waste.



## Glue-free Installation

[interface.com/tactiles](https://www.interface.com/tactiles)

**TacTiles®** Just peel, pull and stick for a hassle-free, durable installation. No mess, no drying time and little, if any, future floor prep. And TacTiles connectors can be recycled with Interface carpet tiles.



## We Back It Up

[interface.com/warranty](https://www.interface.com/warranty)

All Interface carpet tiles come with our standard **15-year warranty**. No ifs, ands or buts.

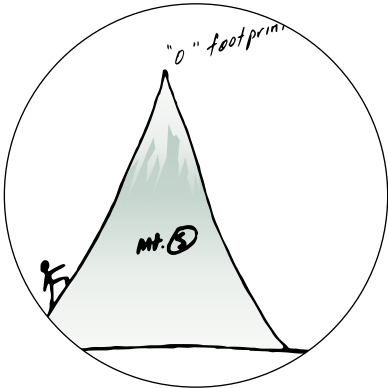


# Why Interface? | Sustainability Leadership

## Where We Are

[interface.com/missionzero](https://www.interface.com/missionzero)

**Mission Zero®** From the beginning, we understood that sustainability had to be addressed with a “whole company” approach. We established our Mission Zero promise to eliminate any negative impact the company has on the environment by 2020, and we’re well on our way to achieving it. See our progress at [interface.com/missionzero](https://www.interface.com/missionzero).



## Zero Carbon

[interface.com/carbonneutral](https://www.interface.com/carbonneutral)

**Carbon Neutral Floors™** Interface is the first global flooring manufacturer to declare that ALL products globally are third party verified carbon neutral throughout their entire life cycle. That means we zero out all greenhouse gas emissions (GHGs) associated with our carpet tile and LVT from creation to end-of-life, resulting in the lowest carbon footprint in the industry.

We’re not adding excess carbon to the atmosphere, and when you buy from us, neither are you.



## Closing the Loop

[interface.com/reentry](https://www.interface.com/reentry)

**ReEntry®** We want our carpet tile and LVT back. Through our ReEntry program we reclaim and recycle our used carpet tile and LVT and turn it into new flooring. We’ll even take many of our competitors’ products.



## Where We Are Going

[interface.com/climatetakeback](https://www.interface.com/climatetakeback)

**Climate Take Back™** With Mission Zero in sight, we’re taking things a step further. We’ve changed our company. It’s time to change the world. Climate Take Back is our bold new mission to reverse global warming. Bold statement? Maybe, but see how we back it up: [interface.com/climatetakeback](https://www.interface.com/climatetakeback).



## Rethinking the Supply Chain

[interface.com/net-works](https://www.interface.com/net-works)

**Net-Works®** Our Net-Works® partnership is an innovative approach to a circular economy. Fishermen in the Philippines and Cameroon collect waste nets and sell them to the fiber manufacturer, Aquafil, for use in their 100% recycled content nylon. We use that nylon to offer you high performance carpet tiles with up to 90% total recycled content. Everybody wins.



All product specifications reflect averages derived from product sample testing, are subject to normal manufacturing and testing tolerances and inherent pattern variances, and may be changed without notice. For more information about these and other important attributes of the product(s) described herein, including recycled content and product warranty information, please see [www.interface.com/disclaimer](https://www.interface.com/disclaimer).



Printed on 50% post consumer waste (PCW) fiber manufactured using wind power.

We have tried our very best to accurately represent product colors. However, due to the nature of printed materials, color of actual products may vary slightly. Please request a sample to see actual product color.