

As part of Interface's Mission Zero promise to eliminate any negative impact on the environment by 2020, we always consider the environment impact of every creative, manufacturing and building decision. This sample book is printed on recycled paper and with soy based ink. Twenty four virgin trees were saved from our use of 1725kg of recycled paper in the production of 5000 sample books. Energy intensity also decreased and greenhouse gases were reduced. The other reductions came from waste water and solid waste. Through our sample reclamation program, we help keep sample materials out of landfill by re-using them until it is time to recycle these sample materials.

www.interface.com

South East Asia

Interface Asia
tel: 65-6478 1510
www.interface.com

South Korea

tel. 82-2-555 1734
www.interface.com

Japan

Interface Japan
tel: 81-3-5733 5211
www.interface.com

India

Interface India
tel: 91 80 30589350
www.interface.com

Beijing Studio

Interface China
tel: 86-10-6590 7810
www.interface.com.cn

Hongkong Studio

Interface China
tel: 852-2802 0838
www.interface.com.cn

Shanghai Studio

Interface China
tel: 86-21-6340 3868
www.interface.com.cn

Australia

Interface Australia
local toll free: 1800 008 101
www.interface.com

05/2017
SF0091T0



Mission Zero:
our promise to eliminate any
negative impact our company
may have on the environment
by the year 2020.

Global Change Collection Progression



Interface®

The variation of nature within the modular framework

Nature offers constantly changing surroundings and stimulates us in different ways. Built spaces can offer the same kind of variety, providing environments matched to the activities taking place.

Global Change extends our library with new colors, patterns and textures —disparate elements that combine to create a cohesive whole. A classic Interface offering, pairing nature-inspired design with the structure of a modular system.

This collection is a new expression of biophilic design, offering a varied sensory experience with wide-ranging colors, patterns, textures, formats and materials. This global collection comprises seven carpet tile ranges in both squares and Skinny Planks™, ranging from organic to crisp designs. Four draw inspiration from familiar organic patterns: Glazing™ and Shading™ recreate the shadows of a forest canopy on the floor, Ground™ and Raku™ reference different terrains. Progression™ I, II and III provide the connective tissue that binds one idea to another, seamlessly.

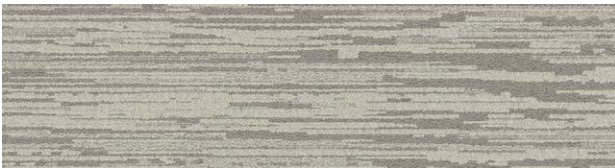
Global Change is available around the world and manufactured in Asia, North America, Australia and Europe.



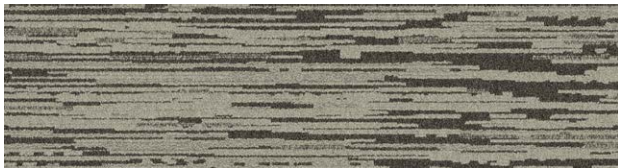




Progression I Colourline



9080-001-000 Daylight



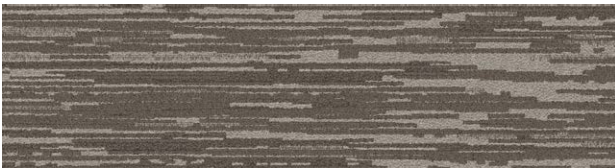
9080-002-000 Desert Shadow



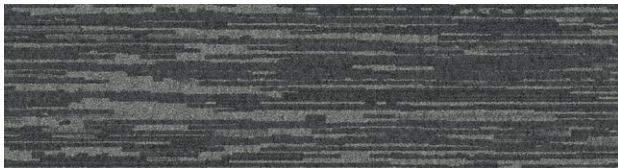
9080-003-000 Evening Dusk



9080-004-000 Morning Mist

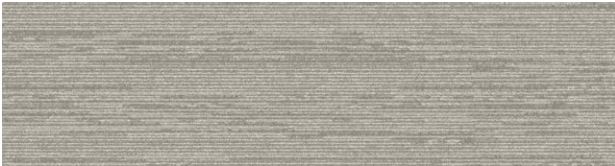


9080-005-000 Fawn

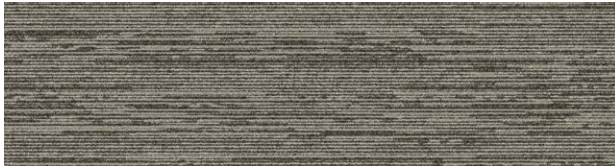


9080-006-000 Eclipse

Progression II Colourline



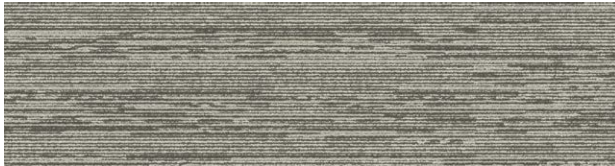
9082-001-000 Daylight



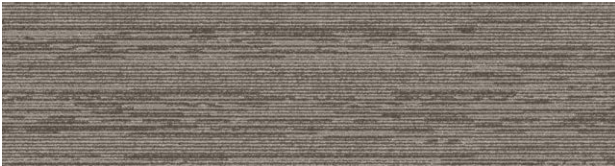
9082-002-000 Desert Shadow



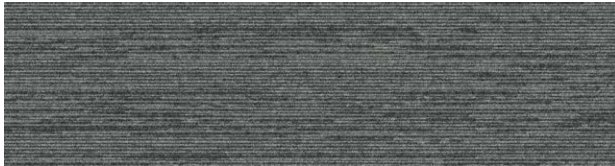
9082-003-000 Evening Dusk



9082-004-000 Morning Mist



9082-005-000 Fawn

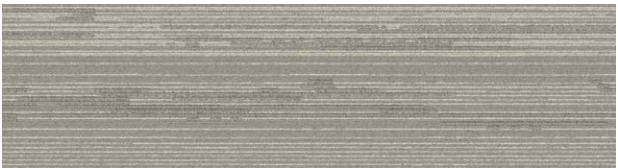


9082-006-000 Eclipse

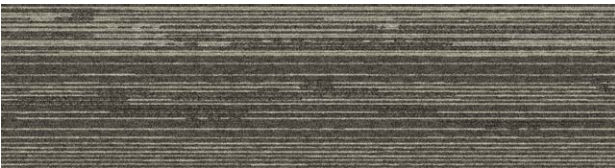




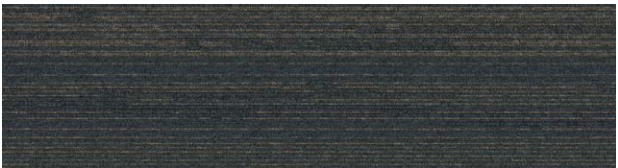
Progression III Colourline



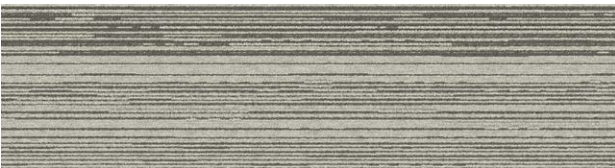
9081-001-000 Daylight



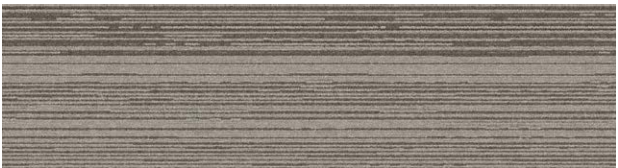
9081-002-000 Desert Shadow



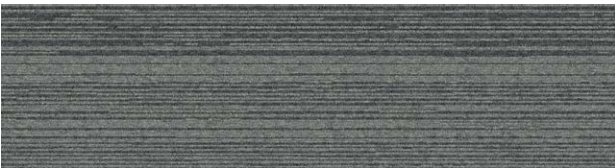
9081-003-000 Evening Dusk



9081-004-000 Morning Mist



9081-005-000 Fawn



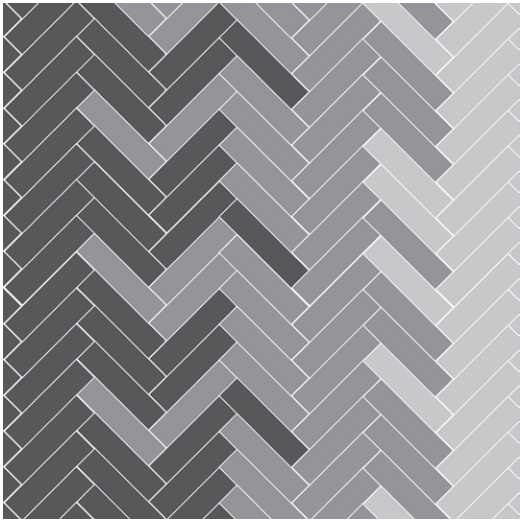
9081-006-000 Eclipse



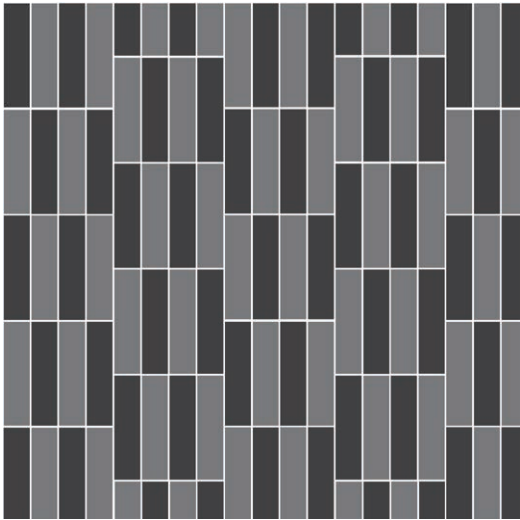
Design Ideas Below are floor layouts showing how to create the design ideas shared in several of the images featured in this brochure.



CARPET TILE PROGRESSION I COLOUR ECLIPSE CARPET TILE PROGRESSION II COLOUR ECLIPSE
CARPET TILE PROGRESSION III COLOUR ECLIPSE INSTALLED HERRINGBONE



CARPET TILE PROGRESSION III COLOURS DAYLIGHT, MORNING MIST INSTALLED PATTERN BY TILE



Specifications

Progression™ I

Style Code	9080 Pattern 000
Product Definition	Tufted textured Tip Sheared Loop
Yarn/Fibre	BCF Nylon Type 6.6 – Recycled Nylon
Colour System	100% Solution Dyed
Machine Gauge	1/10
Pile Thickness	4.5mm +/- 0.5mm
Total Thickness	9.0mm +/- 0.5mm
Tile Size	25cm x 100cm
Area of Use	Commercial – Heavy Use
Lifetime Antimicrobial	Intersept®
Soil/Stain Protection	Protekt2®
Total Recycled Content	GlasBac® 42% to 57% Total Recycled Content Glasbac®RE 62% to 74% Total Recycled Content Ashlar, Herringbone

Installation Methods



Progression™ II

Style Code	9082 Pattern 000
Product Definition	Tufted textured Tip Sheared Loop
Yarn/Fibre	BCF Nylon Type 6.6 – Recycled Nylon
Colour System	100% Solution Dyed
Machine Gauge	1/10
Pile Thickness	3.0mm +/- 0.5mm
Total Thickness	6.5mm +/- 0.5mm
Tile Size	25cm x 100cm
Area of Use	Commercial – Heavy Use
Lifetime Antimicrobial	Intersept®
Soil/Stain Protection	Protekt2®
Total Recycled Content	GlasBac® 42% to 57% Total Recycled Content Glasbac®RE 62% to 74% Total Recycled Content Ashlar, Herringbone

Installation Methods



Progression™ III

Style Code	9081 Pattern 000
Product Definition	Tufted textured Loop
Yarn/Fibre	BCF Nylon Type 6.6 – Recycled Nylon
Colour System	100% Solution Dyed
Machine Gauge	1/12
Pile Thickness	3.0mm +/- 0.5mm
Total Thickness	6.5mm +/- 0.5mm
Tile Size	25cm x 100cm
Area of Use	Commercial – Heavy Use
Lifetime Antimicrobial	Intersept®
Soil/Stain Protection	Protekt2®
Total Recycled Content	GlasBac® 42% to 57% Total Recycled Content Glasbac®RE 62% to 74% Total Recycled Content Ashlar, Herringbone

Installation Methods



Production specifications are subject to normal manufacturing tolerances and may be changed without notice. Slight variation in colour among different production lots are normal and should be considered in the overall installation plan. Products covered by manufacturer's written warranty only. All other warranties, including without limitation any implied warranties of merchantability or fitness for particular purpose, are hereby disclaimed. Contact your representative for written warranty information. Recycled content calculations are based on historical averages by total weight of the product for backings. Yarn/Fibre recycled content calculation excludes backing. We update our recycled content information and other environmental data regularly to reflect changes and advancements in our technology.
*Cool Carpet is not a standard option in Australia and New Zealand.



CoolCarpet™
Intersept®