

**[www.interface.com](http://www.interface.com)**

**United States Headquarters**

1503 Orchard Hill Road  
LaGrange, GA 30240  
1.800.336.0225 ext.56511

**Canadian Headquarters**

233 Lahr Drive  
Belleville, ON K8N 5S2  
1.800.267.2149 ext.52128

**Brazilian Headquarters**

Rua Surubim, 577 - Conjuntos  
73/74 7º Andar  
04571-050 - São Paulo - SP  
+ 55 11 2196 0900

**Latin American Headquarters**

Montes Urales # 415 Piso 6  
Col. Lomas de Chapultepec  
México City, D.F. 11000  
Mexico  
+ 52 55 6395 5100

CIM # IFS00775 06/2017



**Mission Zero®**

our promise to eliminate any  
negative impact our company  
may have on the environment  
by the year 2020.

# Global Change Collection

**Interface®**



**The variation of nature within the modular framework**

Nature offers constantly changing surroundings and stimulates us in different ways. Built spaces can offer the same kind of variety, providing environments matched to the activities taking place.

Global Change extends our library with new colors, patterns and textures—disparate elements that combine to create a cohesive whole. A classic Interface offering, pairing nature-inspired design with the structure of a modular system.

This collection is a new expression of biophilic design, offering a varied sensory experience with wide-ranging colors, patterns, textures, formats and materials. This global collection comprises seven carpet tile ranges in both squares and Skinny Planks™, ranging from organic to crisp designs. Four draw inspiration from familiar organic patterns: Glazing™ and Shading™ recreate the shadows of a forest canopy on the floor, Ground™ and Raku™ reference different terrains. Progression™ I, II and III provide the connective tissue that binds one idea to another, seamlessly.

Global Change is available around the world and manufactured in Asia, North America, Australia and Europe.











CARPET PRODUCT PROGRESSION I COLOR 105500 EVENING DUSK INSTALLED PATTERN BY TILE  
LVT PRODUCT LEVEL SET | TEXTURED STONES  
COLOR A00305 EMPERADOR TAUPE INSTALLED NON DIRECTIONAL

[www.interface.com](http://www.interface.com)

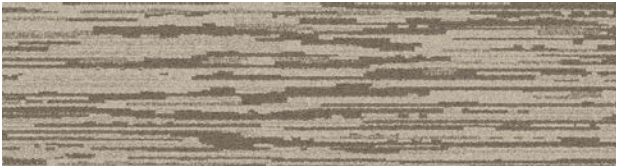


PRODUCT PROGRESSION I COLOR 105502 FAWN PRODUCT PROGRESSION II  
COLOR 105508 FAWN PRODUCT PROGRESSION III COLOR 105538 FAWN INSTALLED ASHLAR

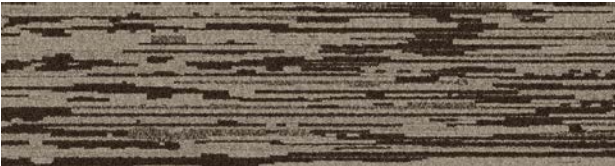




## Progression I Colorline



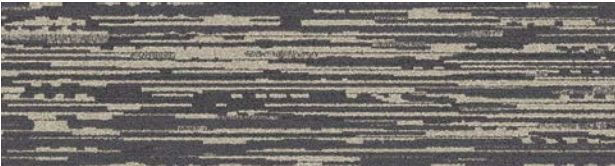
105498 DAYLIGHT



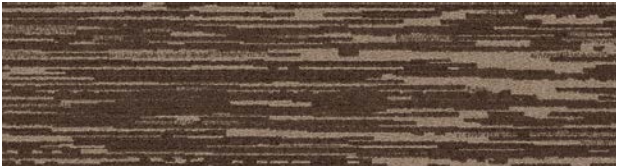
105499 DESERT SHADOW



105500 EVENING DUSK



105501 MORNING MIST



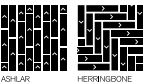
105502 FAWN



105503 ECLIPSE

## Specifications

Modular, 25cm x 1m	142660AK00
Backing System	GlasBac® Tile
Yarn Manufacturer	Universal
Yarn System	Post-Consumer Content Type 6,6 Nylon
Color System	100% Solution Dyed
Construction	Tufted Sheared
Lifetime Antimicrobial	Intersept®
Soil/Stain Protection	Protekt2®
Pile Thickness	0.128 in 3.3 mm
Pile Density	8,719
Total Recycled Content	68%
Indoor Air Quality	CRI Green Label Plus #GLP0820

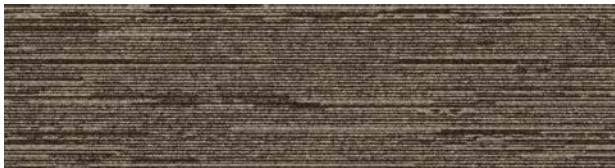




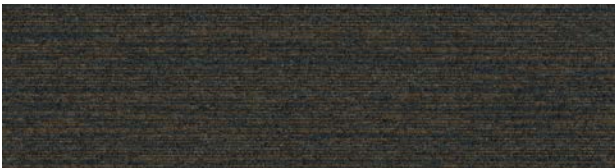
Progression II Colorline



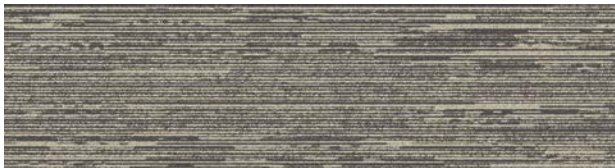
105504 DAYLIGHT



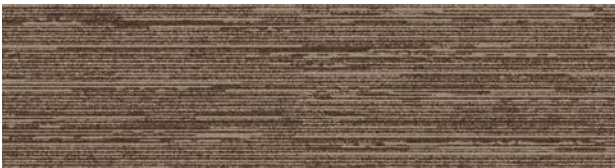
105505 DESERT SHADOW



105506 EVENING DUSK



105507 MORNING MIST



105508 FAWN



105509 ECLIPSE

Specifications

Modular, 25cm x 1m	142670AK00
Backing System	GlasBac® Tile
Yarn Manufacturer	Universal
Yarn System	Post-Consumer Content Type 6,6 Nylon
Color System	100% Solution Dyed
Construction	Tufted Sheared
Lifetime Antimicrobial	Intersept®
Soil/Stain Protection	Protekt <sup>2</sup> ®
Pile Thickness	0.109 in 2.8 mm
Pile Density	5,615
Total Recycled Content	68%
Indoor Air Quality	CRI Green Label Plus #GLP0820

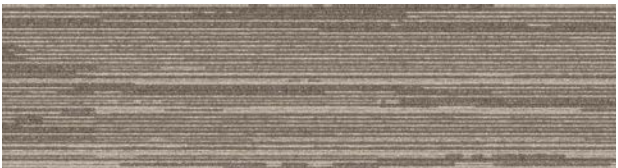


PRODUCT PROGRESSION II. COLOR 105504 DAYLIGHT INSTALLED ASHLAR

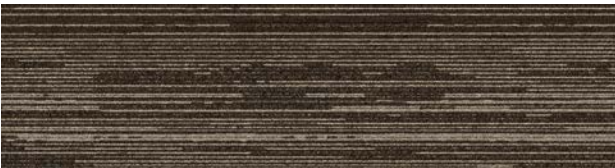




## Progression III Colorline



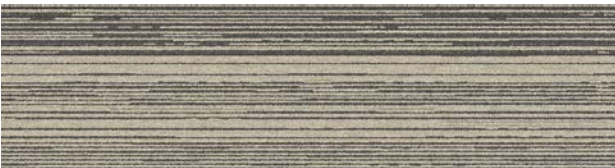
105534 DAYLIGHT



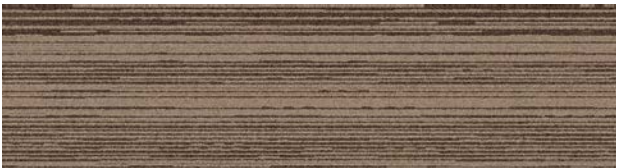
105535 DESERT SHADOW



105536 EVENING DUSK



105537 MORNING MIST



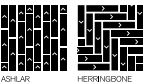
105538 FAWN



105539 ECLIPSE

## Specifications

Modular, 25cm x 1m	147240AK00
Backing System	GlasBac® Tile
Yarn Manufacturer	Universal
Yarn System	Post-Consumer Content Type 6,6 Nylon
Color System	100% Solution Dyed
Construction	Tufted Textured Loop
Lifetime Antimicrobial	Intersept®
Soil/Stain Protection	Protekt2®
Pile Thickness	0.104 in 2.6 mm
Pile Density	6,577
Total Recycled Content	68%
Indoor Air Quality	CRI Green Label Plus #GLP0820



















## Shading Colorline



105516 DAYLIGHT



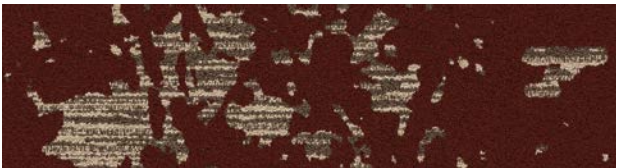
105517 DESERT SHADOW



105518 EVENING DUSK



105519 MORNING MIST



105520 FAWN



105521 ECLIPSE

## Specifications

Modular, 25cm x 1m	142690AK00
Backing System	GlasBac® Tile
Yarn Manufacturer	Universal
Yarn System	Post-Consumer Content Type 6,6 Nylon
Color System	100% Solution Dyed
Construction	Tufted Sheared
Lifetime Antimicrobial	Intersept®
Soil/Stain Protection	Protekt2®
Pile Thickness	0.151 in, 3.8 mm
Pile Density	6,914
Total Recycled Content	68%
Indoor Air Quality	CRI Green Label Plus #GLP0820





Glazing Colorline



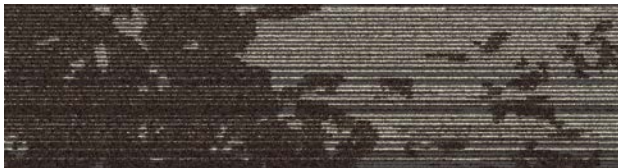
105546 DAYLIGHT



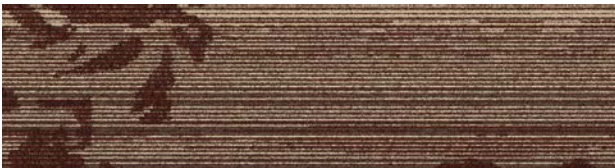
105547 DESERT SHADOW



105548 EVENING DUSK



105549 MORNING MIST



105550 FAWN



105551 ECLIPSE

Specifications

Modular, 25cm x 1m	147260AK00
Backing System	GlasBac® Tile
Yarn Manufacturer	Universal
Yarn System	Post-Consumer Content Type 6,6 Nylon
Color System	100% Solution Dyed
Construction	Tufted Textured Loop
Lifetime Antimicrobial	Intersept®
Soil/Stain Protection	Protekt2®
Pile Thickness	0.104 in, 2,6 mm
Pile Density	6,577
Total Recycled Content	68%
Indoor Air Quality	CRI Green Label Plus #GLP0820



PRODUCT GLAZING COLOR 105547 DESERT SHADOW INSTALLED ASHLAR









[www.interface.com](http://www.interface.com)

PRODUCT RAKU COLOR 105512 EVENING DUSK INSTALLED NON DIRECTIONAL



CARPET PRODUCT GROUND COLOR 105541 DESERT SHADOW INSTALLED QUARTER-TURN  
LVT PRODUCT LEVEL SET | NATURAL STONES  
COLOR A00102 MARONE DARK MARBLE INSTALLED NON DIRECTIONAL



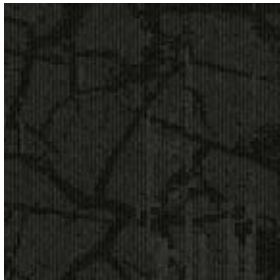
Ground Colorline



105540 DAYLIGHT



105541 DESERT SHADOW



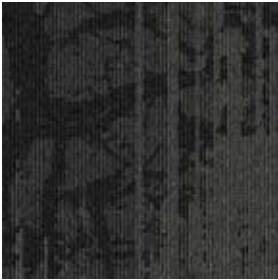
105542 EVENING DUSK



105543 MORNING MIST



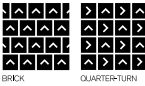
105544 FAWN



105545 ECLIPSE

Specifications

Modular, 50cm x 50cm	1472502500
Backing System	GlasBac® Tile
Yarn Manufacturer	Universal
Yarn System	Post-Consumer Content Type 6,6 Nylon
Color System	100% Solution Dyed
Construction	Tufted Textured Loop
Lifetime Antimicrobial	Intersept®
Soil/Stain Protection	Protekt2®
Pile Thickness	0.079 in 2.0 mm
Pile Density	6,577
Total Recycled Content	68%
Indoor Air Quality	CRI Green Label Plus #GLP0820



BRICK QUARTER-TURN



PRODUCT GROUND COLORS 105540 DAYLIGHT, 105543 MORNING MIST INSTALLED BRICK

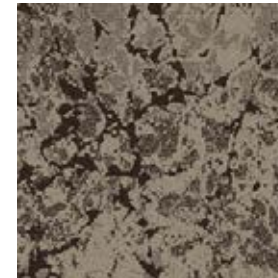




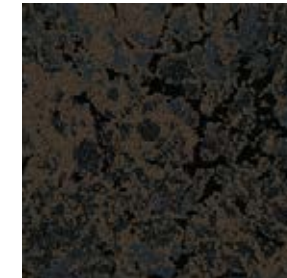
## Raku Colorline



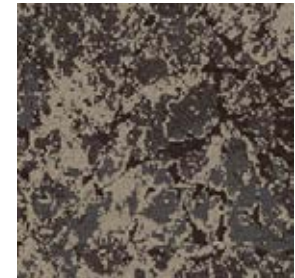
105510 DAYLIGHT



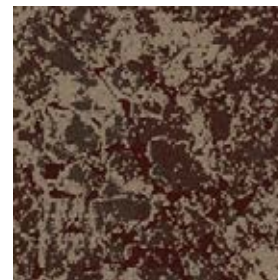
105511 DESERT SHADOW



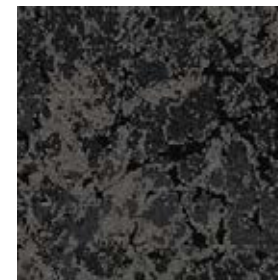
105512 EVENING DUSK



105513 MORNING MIST



105514 FAWN



105515 ECLIPSE

## Specifications

Modular, 50cm x 50cm	1426802500
Backing System	GlasBac® Tile
Yarn Manufacturer	Universal
Yarn System	Post-Consumer Content Type 6,6 Nylon
Color System	100% Solution Dyed
Construction	Tufted Sheared
Lifetime Antimicrobial	Intersept®
Soil/Stain Protection	Protekt2®
Pile Thickness	0.128 in 3.3 mm
Pile Density	8,437
Total Recycled Content	68%
Indoor Air Quality	CRI Green Label Plus #GLP0820







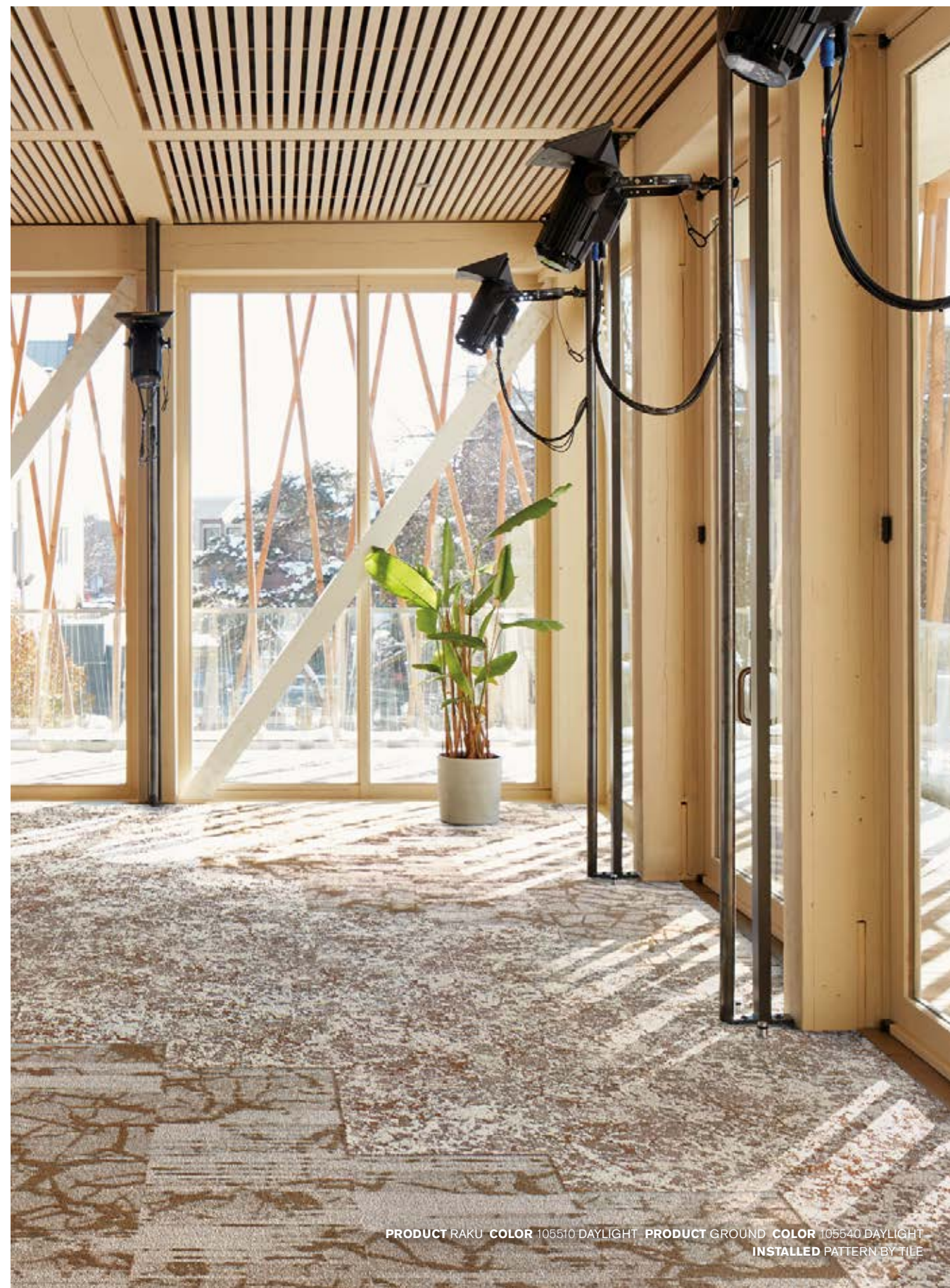




LITOWITZ ATRIUM

CARPET PRODUCT RAKU COLOR 105510 DAYLIGHT INSTALLED NON DIRECTIONAL  
LVT PRODUCT LEVEL SET | NATURAL WOODGRAINS  
COLOR A00204 BEECH INSTALLED ASHLAR

[www.interface.com](http://www.interface.com)



PRODUCT RAKU COLOR 105510 DAYLIGHT PRODUCT GROUND COLOR 105540 DAYLIGHT  
INSTALLED PATTERN BY TILE





[www.interface.com](http://www.interface.com)

**PRODUCT RAKU** **COLOR** 105512 EVENING DUSK **PRODUCT GROUND** **COLOR** 105541 DESERT SHADOW **INSTALLED** PATTERN BY TILE



**PRODUCT GROUND** **COLOR** 105542 EVENING DUSK **INSTALLED** QUARTER-TURN





[www.interface.com](http://www.interface.com)

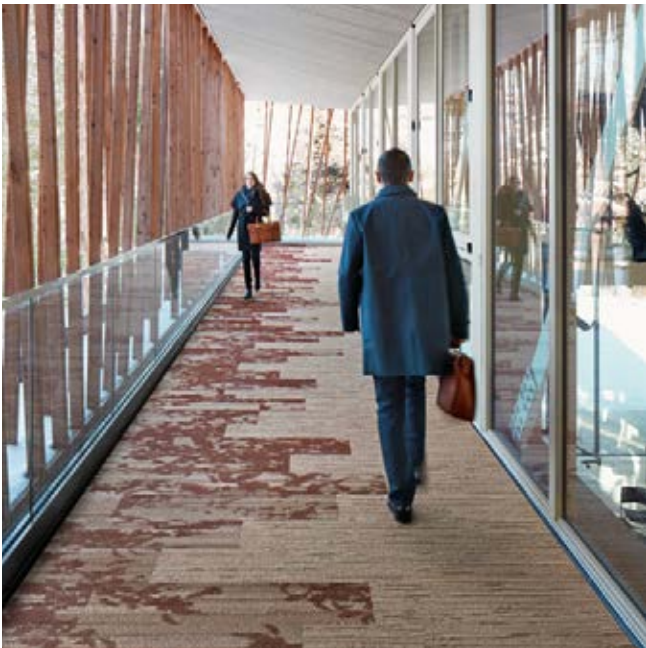
PRODUCT PROGRESSION 1 COLOR 105501 MORNING MIST  
PRODUCT SHADING COLOR 105519 MORNING MIST INSTALLED ASHLAR



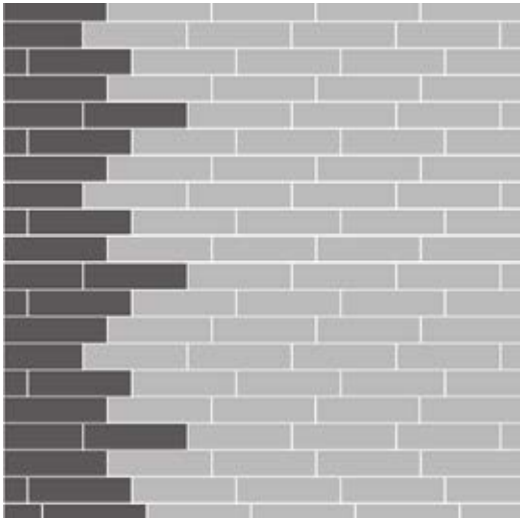
PRODUCT GLAZING COLOR 105551 ECLIPSE PRODUCT GROUND COLOR 105545 ECLIPSE  
PRODUCT PROGRESSION 1 COLOR 105503 ECLIPSE INSTALLED PATTERN BY TILE



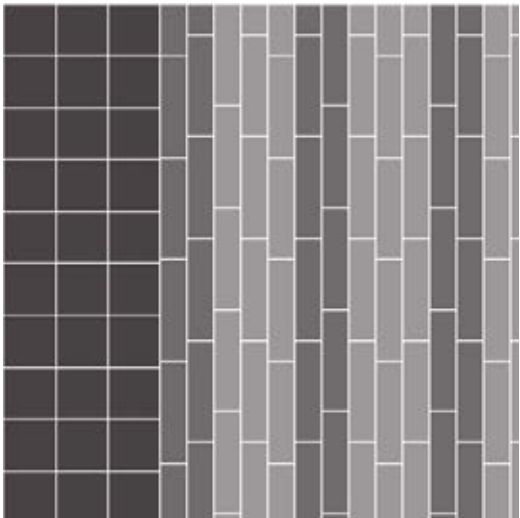
Design Ideas Below are floor layouts showing how to create the design ideas shared in several of the images featured in this brochure.



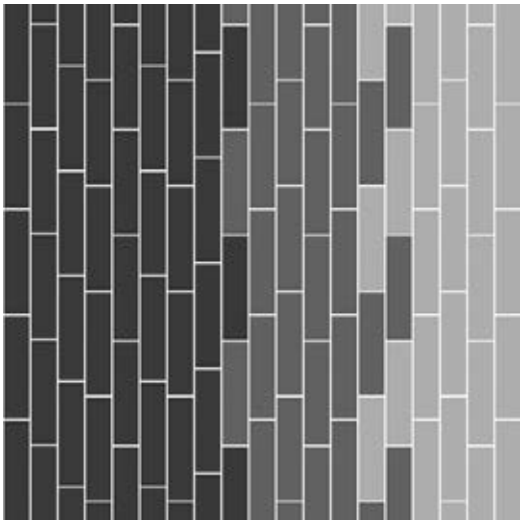
**PRODUCT** GLAZING **COLOR** 105550 FAWN  
**PRODUCT** PROGRESSION II **COLOR** 105508 FAWN **INSTALLED** ASHLAR



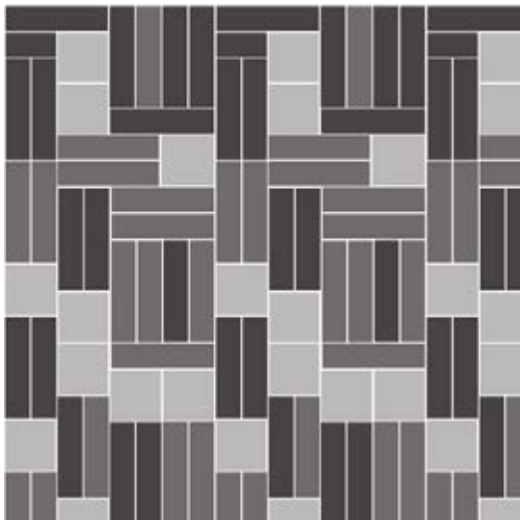
**CARPET PRODUCT** GLAZING **COLOR** 105549 MORNING MIST **CARPET PRODUCT** SHADING **COLOR** 105519 MORNING MIST **INSTALLED** ASHLAR  
**LVT PRODUCT** LEVEL SET | TEXTURED STONES **COLOR** A00302 COOL POLISHED CEMENT **INSTALLED** NON DIRECTIONAL



**PRODUCT** GLAZING **COLOR** 105547 DESERT SHADOW **PRODUCT** PROGRESSION III **COLOR** 105535 DESERT SHADOW  
**PRODUCT** PROGRESSION II **COLOR** 105505 DESERT SHADOW **INSTALLED** ASHLAR

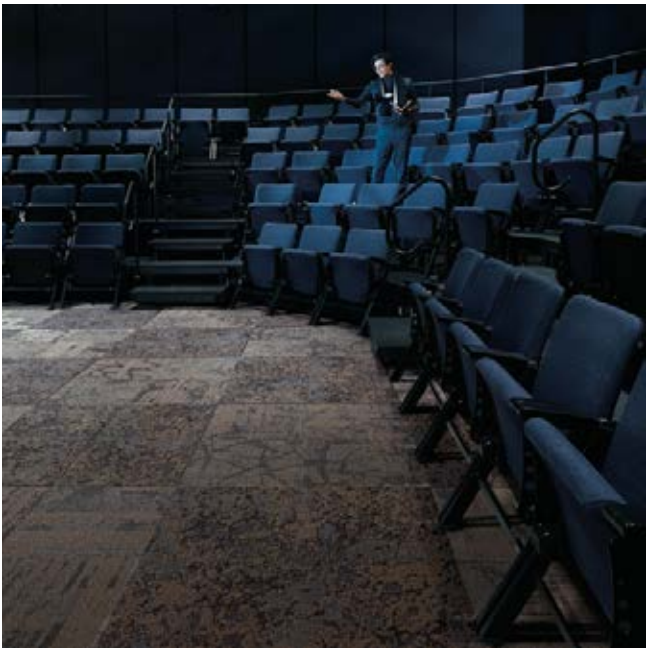


**PRODUCT** GLAZING **COLOR** 105551 ECLIPSE **PRODUCT** GROUND **COLOR** 105545 ECLIPSE  
**PRODUCT** PROGRESSION I **COLOR** 105503 ECLIPSE **INSTALLED** PATTERN BY TILE

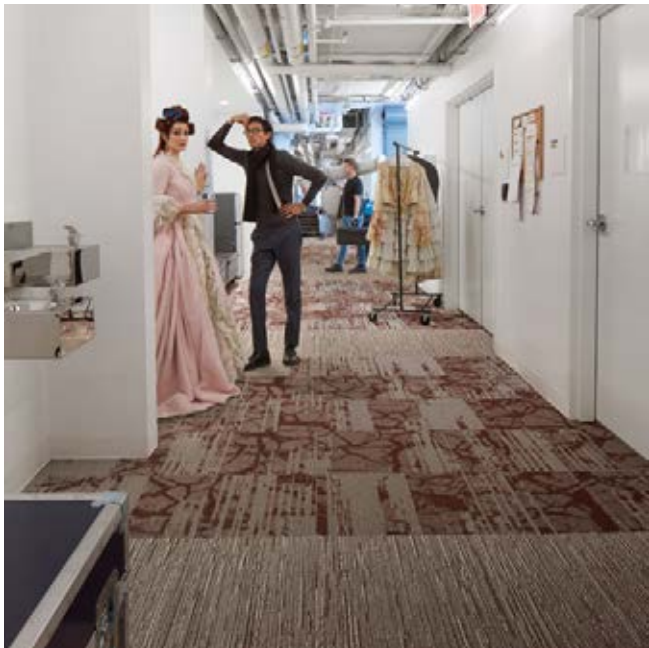
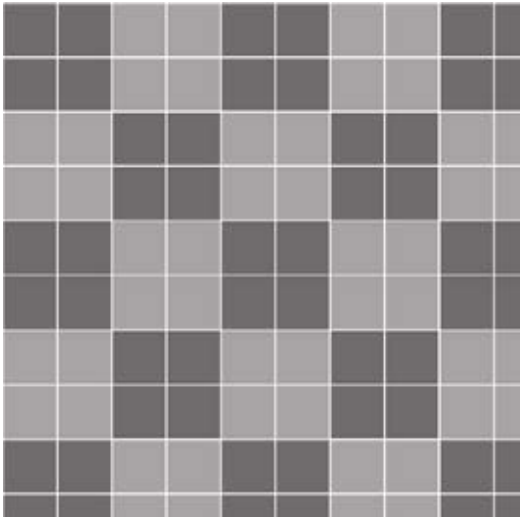




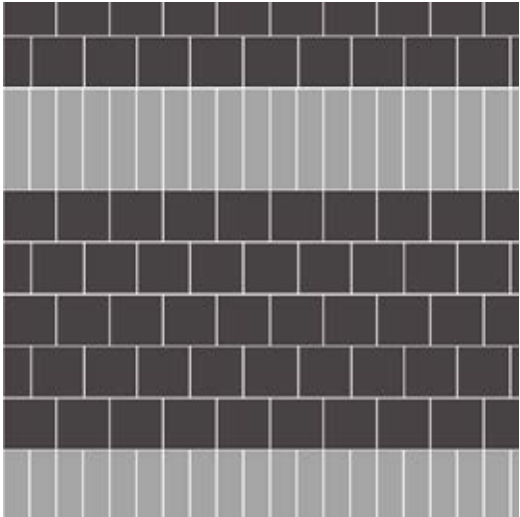
Design Ideas Below are floor layouts showing how to create the design ideas shared in several of the images featured in this brochure.



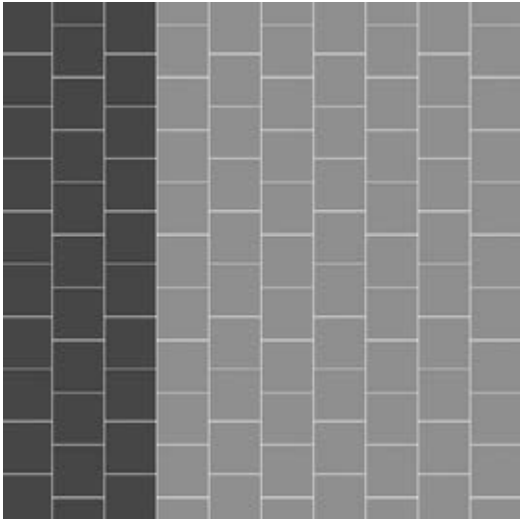
PRODUCT RAKU COLOR 105512 EVENING DUSK  
PRODUCT GROUND COLOR 105541 DESERT SHADOW INSTALLED PATTERN BY TILE



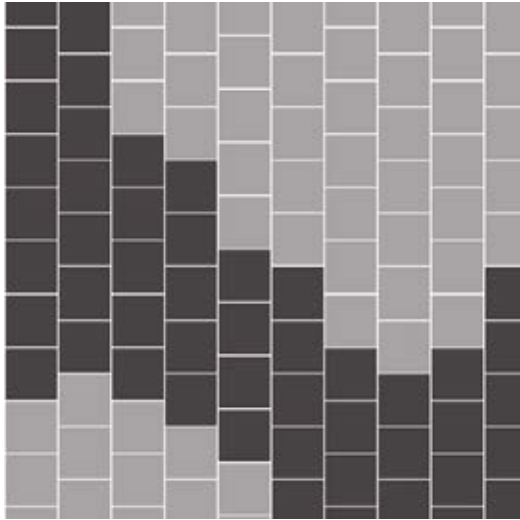
PRODUCT GROUND COLOR 105544 FAWN  
PRODUCT PROGRESSION II COLOR 105508 FAWN INSTALLED PATTERN BY TILE



PRODUCT GROUND COLORS 105543 MORNING MIST, 105540 DAYLIGHT INSTALLED BRICK



PRODUCT RAKU COLOR 105510 DAYLIGHT PRODUCT GROUND COLOR 105540 DAYLIGHT INSTALLED PATTERN BY TILE

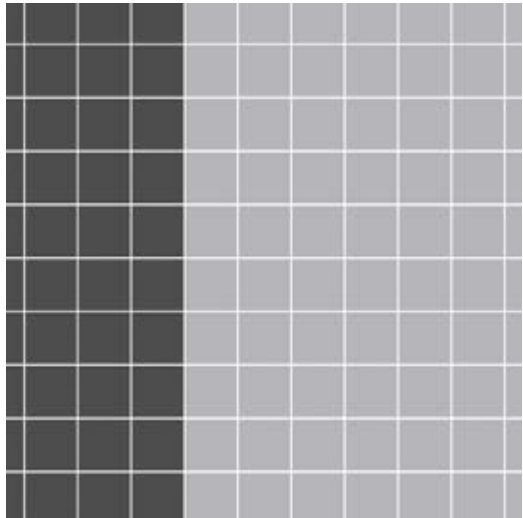




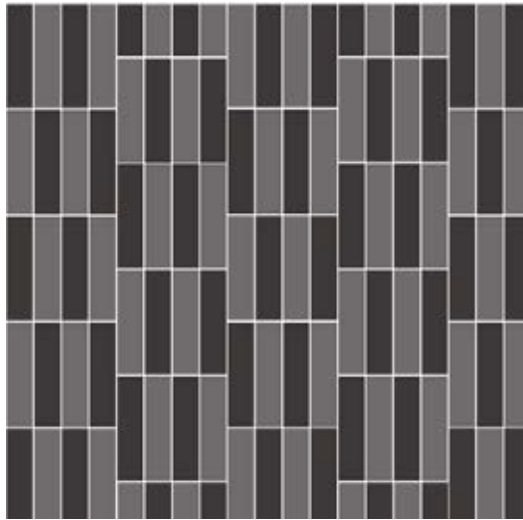
Design Ideas Below are floor layouts showing how to create the design ideas shared in several of the images featured in this brochure.



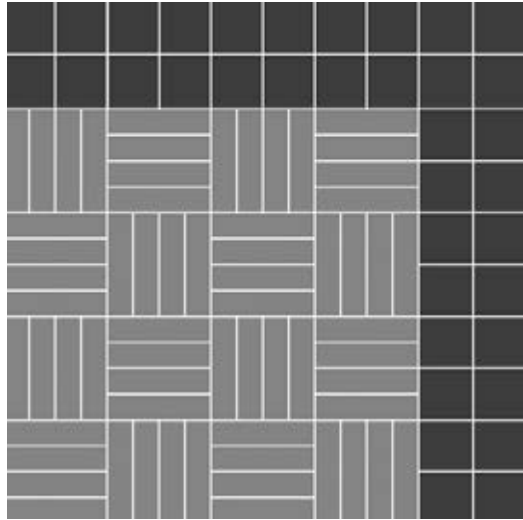
**PRODUCT** PROGRESSION I **COLOR** 105503 ECLIPSE **PRODUCT** PROGRESSION II **COLOR** 105509 ECLIPSE  
**PRODUCT** PROGRESSION III **COLOR** 105539 ECLIPSE **INSTALLED** HERRINGBONE



**PRODUCT** PROGRESSION I **COLOR** 105502 FAWN **PRODUCT** PROGRESSION II  
**COLOR** 105508 FAWN **PRODUCT** PROGRESSION III **COLOR** 105538 FAWN **INSTALLED** ASHLAR



**PRODUCT** PROGRESSION III **COLORS** 105534 DAYLIGHT, 105537 MORNING MIST **INSTALLED** PATTERN BY TILE



**CARPET PRODUCT** PROGRESSION I **COLOR** 105500 EVENING DUSK **INSTALLED** PATTERN BY TILE  
**LVT PRODUCT** LEVEL SET | NATURAL STONES **COLOR** A00305 EMPERADOR TAUPE **INSTALLED** NON DIRECTIONAL



Why Our Modular Carpet?



Modular Carpet Tile

*Performance and Flexibility.* Interface's standard backing systems set the industry standard for modular performance. Tiles stay on the floor with no upcurl, no tapping and no ripplingeffect, yet are easy to selectively replace. Our modular carpet is also easier to handle, install and maintain than bulky roll carpet. And, it installs with less waste so you save time and money—3-4% for typical modular carpet compared to an average waste factor of 14% for traditional roll carpet.



Cool Carpet™

*The Low Carbon Option.* Help stop climate change. ALL Interface modular carpet sold in North America is third party verified climate neutral Cool Carpet. We start by using low-carbon materials and manufacturing processes, then Cool Carpet zeros out all remaining greenhouse gas (GHG) emissions associated with the entire lifecycle of your carpet, from raw material extraction through use and recycling.



TacTiles®

*No Glue Installation.* Our revolutionary TacTiles installation system eliminates the need for glue, adhering tiles securely together to form a floor that “floats” for greater flexibility, easier replacement and long-term performance. The result? Less mess, less waste and virtually no VOCs, not to mention an environmental footprint that is over 90% lower than that of traditional glue adhesives.



Intersept®

*Mold Protection.* Our proprietary preservative, Intersept, protects our modular carpet against mold growth and odor-causing bacteria—guaranteed. Intersept treated carpet, with proper maintenance, shows no mold or bacterial growth when tested per the ASTM E2471 Standard Test Method. Intersept is EPA approved for safe use in carpet, water insoluble and contains no halogens, heavy metals, phenols or formaldehyde.



ReEntry®

*Recyclable is Now a Reality.* Through our ReEntry program and partnerships with our fiber suppliers and recycling centers throughout North America, separated Type 6 and 6,6 nylon are recycled into new 6 and 6,6 nylon, while separated GlasBac® and similar competitor backings are recycled into GlasBacRE non-virgin PVC backing using our Cool Blue™ technology. The result? Products with up to 81% total recycled content, including as much as 35% post-consumer content.



Sustainable Choice

*Environmental Responsibility.* Many Interface products carry the GreenCircle Certified Environmental Facts label, which has verified that standard Interface products offer a minimum of 66% and 80% total recycled content when backed with GlasBac® and GlasBacRE backing respectively, using 99% renewable energy.

Samples

Order samples at [www.interface.com](http://www.interface.com). You'll receive email order confirmations, 24/7 access to order status and more. Not near a computer? You can also request samples by calling one of the numbers below.

United States	Canada
1.877.605.1500	1.866.398.3192
Brazil	Latin America
+ 55 11 2196 0900	+ 52 55 6395 5100

[www.interface.com](http://www.interface.com)

Register at [www.interface.com](http://www.interface.com) to:

- Browse products and order samples
- Browse floor designs, change colors, view as a grid or in a room, download and share
- Use our LEED Calculator
- Check order status and inventory availability
- Sign up to get the latest information on Interface products and news

InterCircle™ Sample Return

Help us close the loop on the carpet sampling process. Through our InterCircle Sample Return program, sample materials stay out of the landfill and are re-used as samples until it is time to recycle them into new carpet. By reducing sample production material and diverting old materials from the landfill, we can reduce our overall environmental footprint.

Call 1.877.605.1500 (U.S.) or 1.866.398.3192 (Canada) to order a sample return bag with a prepaid return label.

Third Party Certification

cool carpet™

**Cool Carpet** – Our third party verified carbon offset program zeroes out all greenhouse gas (GHG) emissions associated with the entire lifecycle of your carpet.



**Environmental Product Declaration (EPD)** – A statement of product ingredients and environmental impacts over the entire life cycle of a product. A comprehensive life cycle assessment (LCA) is performed to ISO standards to develop an EPD, after which both the EPD and LCA must be third party verified.



**Sustainable Assessment for Carpet** – The only carpet sustainability standard in North America that evaluates the environmental impact of carpet for its entire lifecycle.



**CRI Green Label Plus** – An independent testing program that identifies carpet and adhesives with very low emissions of VOCs to help improve indoor air quality.

All product specifications reflect averages derived from product sample testing, are subject to normal manufacturing and testing tolerances and inherent pattern variances, and may be changed without notice. For more information about these and other important attributes of the product(s) described herein, including recycled content and product warranty information, please see [www.interface.com/disclaimer](http://www.interface.com/disclaimer).



Printed on 50% post consumer waste (PCW) fiber manufactured using wind power.

We have tried our very best to accurately represent product colors. However, due to the nature of printed materials, color of actual products may vary slightly. Please request a sample to see actual product color.