



Printed on 50% post consumer waste (PCW) fiber manufactured using wind power.

[interface.com](https://www.interface.com)

**United States Headquarters**  
1280 West Peachtree Street NW  
Atlanta, GA 30309  
1.800.634.6032

**Canadian Headquarters**  
233 Lahr Drive  
Belleville, ON K8N 5S2  
1.800.267.2149 ext. 52128

**Latin American Headquarters**  
Montes Urales # 415 Piso 6  
Lomas de Chapultepec  
Miguel Hidalgo, CDMX  
11000 Mexico  
+ 52.55.2791.6812

CIM #IFS00798 02/2023



Climate change is undeniable. And reversible. Our mission is to prove it. Join the #ClimateTakeBack and help create a climate fit for life.

# Aerial Collection Aerial Flying Colors

AE311  
AE315  
AE317

**Interface®**



Aerial™ Flying Colors

POW! The Aerial™ Collection just got a boost of color. Pure color tiles connect to “color-full” tiles; colorful tiles connect to transition tiles; and transition tiles connect to the strong, neutral foundation that skyrocketed Aerial from the start.

Aerial Planks, Aerial Squares and Aerial Neighborhood™ are now joined by Aerial Flying Colors, creating a library of 87 tiles in a full range of vibrant and neutral colors in squares and planks.

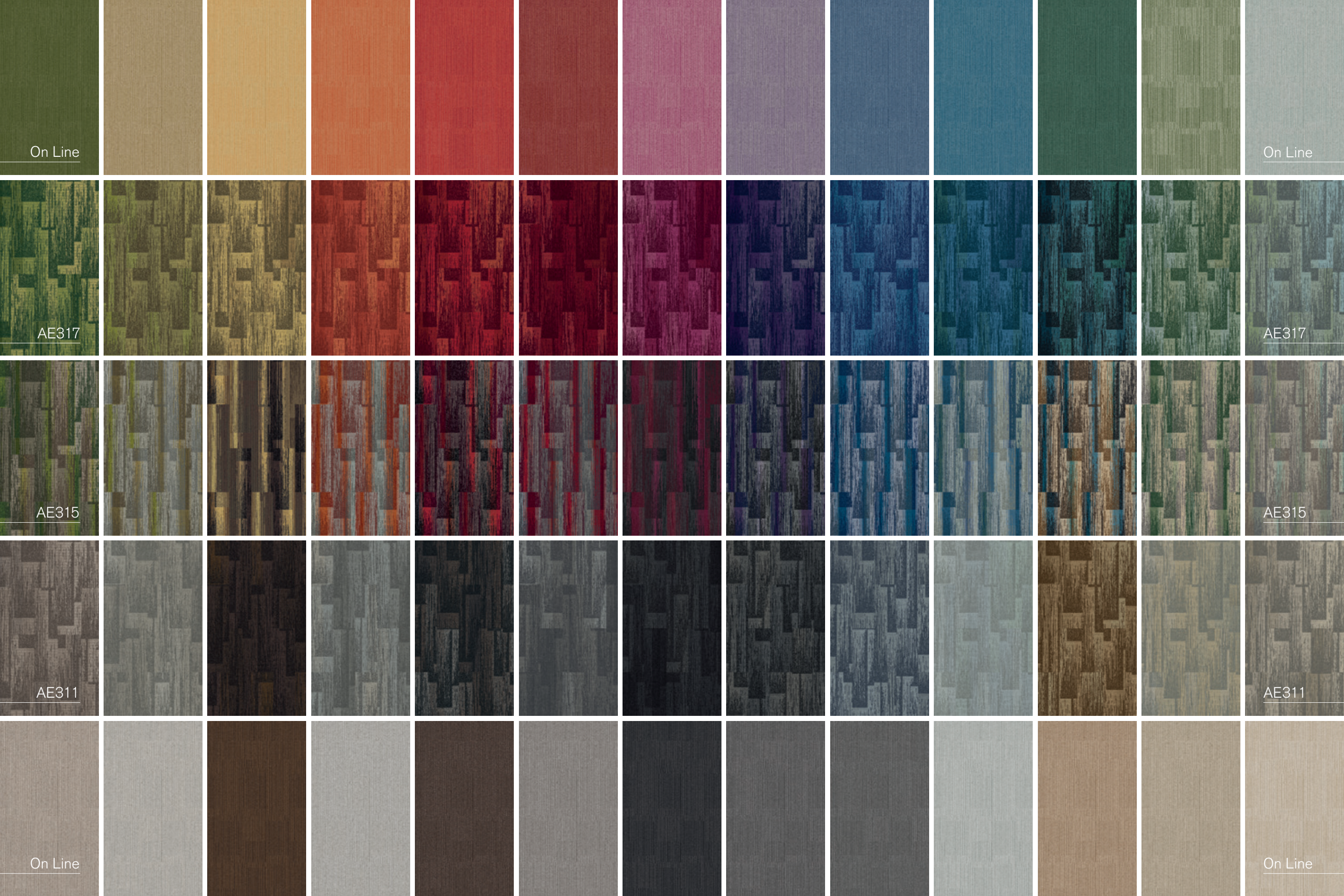
Aerial Flying Colors adds to the Aerial Planks offering with two new styles, AE317 and AE315, and more colors in AE311. Plus, coordinating style On Line™ is expanded to offer solid companions in each Aerial Flying Colors colorway. Use AE315 to blend a spray of color to a neutral ground, creating that signature Interface transition tile, or cast a soft hue across the entire floor plane. Use AE317 to make a bold leap with a vibrant, mixed-hue approach to each colorway.

There are thirteen color sequences presented with an On Line bright at the top and a neutral at the bottom to accent, define and set color direction. But don't just look up and down—look left and right across the full array to find your own unique combination.

The entire Aerial Collection is made with 100% recycled content nylon and is part of our i2™ product family with benefits like mergeable dye lots that enhance selective replacement. Like all flooring you specify from Interface, Aerial Flying Colors carpet tiles are carbon neutral across their full product life cycle through our third party verified Carbon Neutral Floors™ program







On Line

On Line

AE317

AE317

AE315

AE315

AE311

AE311

On Line

On Line







AE317 Color Range



105821 GRASS



105822 CITRON



105823 MARIGOLD



105824 PERSIMMON



105825 POPPY



105826 BERRY



105827 MAGENTA



105828 IRIS



105829 AZURE



105830 AQUAMARINE



105831 EMERALD



105832 LEAF



105833 EUCALYPTUS

Specifications **i2**

|                         |                               |
|-------------------------|-------------------------------|
| Modular, 25cm x 1m      | 163270                        |
| Yarn Manufacturer       | Aquafil                       |
| Yarn System             | 100% Recycled Content Nylon   |
| Color System            | 100% Solution Dyed            |
| Construction            | Tufted Textured Loop          |
| Preservative Protection | Intersept®                    |
| Soil/Stain Protection   | Protekt <sup>2</sup> ®        |
| Pile Thickness          | 0.10 in., 2.50 mm             |
| Pile Density            | 6,245 oz./yd³                 |
| Total Recycled Content  | Up To 83.05%                  |
| Indoor Air Quality      | CRI Green Label Plus #GLP0820 |

View the full product specification on [interface.com](#)

Installation Methods



ASHLAR



HERRINGBONE



**BROWSE IMAGES**  
**ORDER SAMPLES**



PRODUCT AE317 COLOR 105831 EMERALD INSTALLED ASHLAR









## AE315 Color Range



105808 MUSHROOM/GRASS



105809 FOG/CITRON



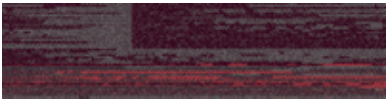
105810 CHESTNUT/MARIGOLD



105811 GREIGE/PERSIMMON



105812 LOAM/POPPY



105813 IRON/BERRY



105814 INK/MAGENTA



105815 SMOKE/IRIS



105816 GRANITE/AZURE



105817 MIST/AQUAMARINE



105818 TOPAZ/EMERALD



105819 TAUPE/LEAF



105820 BISCUIT/EUCALYPTUS

## Specifications **i2**

|                         |                               |
|-------------------------|-------------------------------|
| Modular, 25cm x 1m      | 163230                        |
| Yarn Manufacturer       | Aquafil                       |
| Yarn System             | 100% Recycled Content Nylon   |
| Color System            | 100% Solution Dyed            |
| Construction            | Tufted Textured Loop          |
| Preservative Protection | Intersept®                    |
| Soil/Stain Protection   | Protek <sup>i2</sup>          |
| Pile Thickness          | 0.10 in., 2.50 mm             |
| Pile Density            | 5,878 oz./yd <sup>3</sup>     |
| Total Recycled Content  | Up To 82.89%                  |
| Indoor Air Quality      | CRI Green Label Plus #GLP0820 |

View the full product specification on [interface.com](https://www.interface.com)

## Installation Methods



ASHLAR



HERRINGBONE



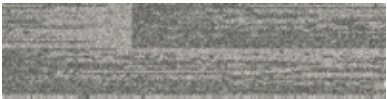
**BROWSE IMAGES**  
**ORDER SAMPLES**



AE311 Color Range



105803 MUSHROOM



104669 FOG



104671 CHESTNUT



104672 GREIGE



105804 LOAM



104673 IRON



104675 INK



104674 SMOKE



105805 GRANITE



104668 MIST



105806 TOPAZ



104670 TAUPE



105807 BISCUIT

Specifications **i2**

|                         |                               |
|-------------------------|-------------------------------|
| Modular, 25cm x 1m      | 138830                        |
| Yarn Manufacturer       | Aquafil                       |
| Yarn System             | 100% Recycled Content Nylon   |
| Color System            | 100% Solution Dyed            |
| Construction            | Tufted Textured Loop          |
| Preservative Protection | Intersept®                    |
| Soil/Stain Protection   | Protekt <sup>2</sup> ®        |
| Pile Thickness          | 0.12 in., 2.50 mm             |
| Pile Density            | 4,576 oz/yd³                  |
| Total Recycled Content  | Up To 82.74%                  |
| Indoor Air Quality      | CRI Green Label Plus #GLP0820 |

View the full product specification on [interface.com](#)

Installation Methods



ASHLAR



HERRINGBONE



**BROWSE IMAGES**  
**ORDER SAMPLES**



**PRODUCT** AE311 **COLOR** 105803 MUSHROOM **INSTALLED** ASHLAR



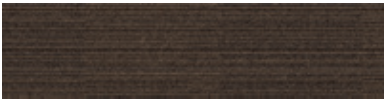
On Line™ Color Range



103783 MUSHROOM



105262 PIGEON



103782 COFFEE



105259 FOG



103781 LOAM



105263 TITANIUM



103786 INK



103787 PEWTER



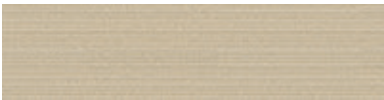
105260 GRANITE



103791 CLOUD



103784 TOPAZ



105252 LICHEN

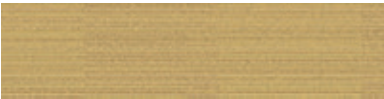


103785 BISCUIT

On Line™ Color Range (cont'd)



105264 GRASS



105268 CITRON



105269 MARIGOLD



105834 PERSIMMON



103801 POPPY



105272 BERRY



105275 MAGENTA



105274 IRIS



103797 AZURE



105266 AQUAMARINE



105265 EMERALD



105835 LEAF



105836 EUCALYPTUS

Specifications **i2**

|                         |                               |
|-------------------------|-------------------------------|
| Modular, 25cm x 1m      | 138700                        |
| Yarn Manufacturer       | Aquafil                       |
| Yarn System             | 100% Recycled Content Nylon   |
| Color System            | 100% Solution Dyed            |
| Construction            | Tufted Textured Loop          |
| Preservative Protection | Intersept®                    |
| Soil/Stain Protection   | Protekt <sup>2</sup> ®        |
| Pile Thickness          | 0.12 in., 3.1 mm              |
| Pile Density            | 6,146 oz./yd³                 |
| Total Recycled Content  | Up To 83.6%                   |
| Indoor Air Quality      | CRI Green Label Plus #GLP0820 |

View the full product specification on [interface.com](#)

Installation Methods



ASHLAR



HERRINGBONE

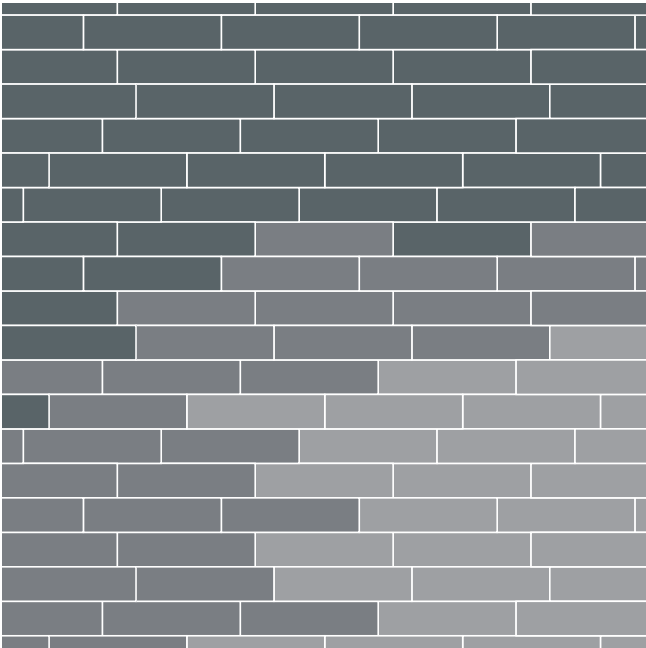


**BROWSE IMAGES**  
**ORDER SAMPLES**

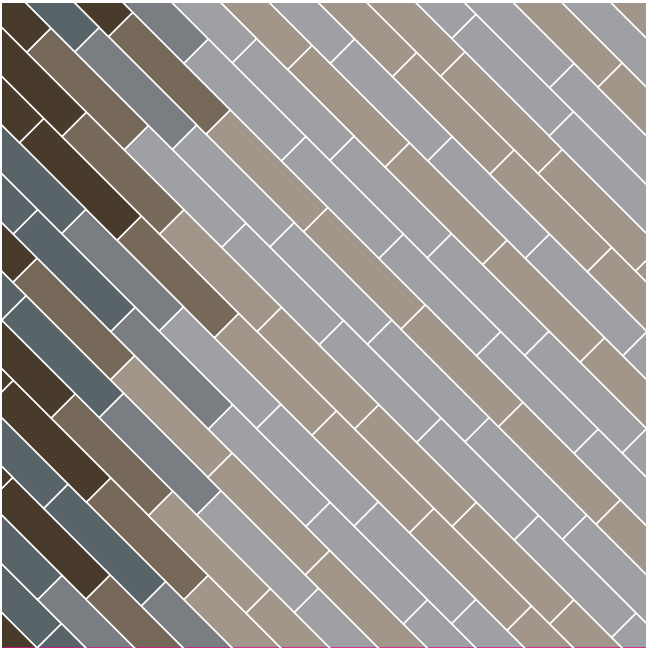
On Line is a coordinate of Aerial Flying Colors. Additional colors can be found on [interface.com/online](#).



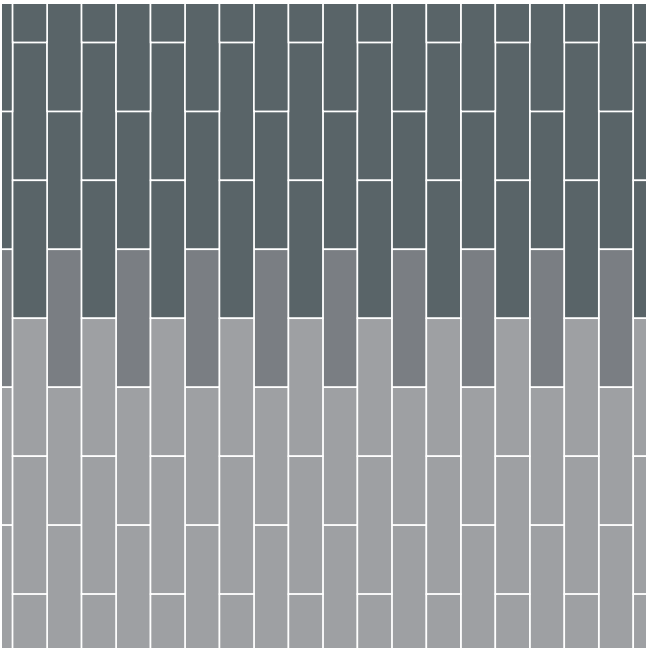
Design Ideas    Color is a powerful tool. Define space, add wayfinding and get creative with a custom floor using these pattern by tile design ideas.



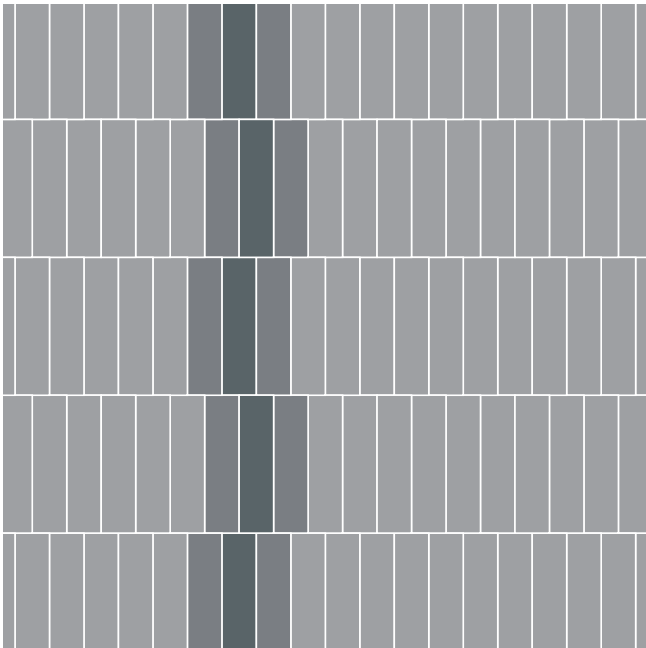
**PRODUCT** AE311   **COLOR** 105807 BISCUIT   **PRODUCT** AE315   **COLOR** 105820 BISCUIT/EUCALYPTUS   **PRODUCT** AE317   **COLOR** 105833 EUCALYPTUS  
**INSTALLED PATTERN BY TILE**



**PRODUCT** AE317   **COLORS** 105830 AQUAMARINE, 105824 PERSIMMON   **PRODUCT** AE315   **COLORS** 105817 MIST/AQUAMARINE, 105811 GREIGE/  
PERSIMMON   **PRODUCT** AE311   **COLORS** 104668 MIST, 104672 GREIGE   **INSTALLED PATTERN BY TILE**



**PRODUCT** AE311   **COLOR** 104672 GREIGE   **PRODUCT** AE317   **COLOR** 105824 PERSIMMON   **PRODUCT** AE315   **COLOR** 105811 GREIGE/PERSIMMON  
**INSTALLED PATTERN BY TILE**



**PRODUCT** AE311   **COLOR** 104673 IRON   **PRODUCT** AE315   **COLOR** 105813 IRON/BERRY   **PRODUCT** AE317   **COLOR** 105826 BERRY  
**INSTALLED PATTERN BY TILE**





# Interface Design Studio

## Designer to Designer

Whether you're just getting started with a design project or you're looking for support in the home stretch, the Interface Design Studio is here to help. Our team of trained designers has a wealth of experience and a deep knowledge of our products, saving you time by focusing on the foundation of every design project - the floor.

## Color That Moves You

Looking for inspiration? Do you need help creating a floorplan with the transitions of Aerial Flying Colors? Interface Design Studio is equipped to do anything you need, from designing an entire floorplan to developing custom colors or even original cuts and custom designs. Let Interface Design Studio help you create a moving color story with Aerial Flying Colors.



Use our digital floor design tool to see these products in your own space or in one of our pre-selected rooms.

[Interface.com/floordesign](https://Interface.com/floordesign)





Why Our Modular Flooring?



**i2® Modular Carpet**  
*Minimize waste & save money.* Interface's i2® styles have mergeable dye lots. That means i2 tiles from different dye lots always blend with tiles of the same color, even when individual tiles are selectively replaced years later. This minimizes the need for attic stock and saves money. And i2 styles that install non directionally generate an average of only 1.5% installation waste as compared to 3-4% for typical modular carpet and an average of 14% for traditional roll carpet.



**TacTiles™**  
*No glue installation.* Our revolutionary TacTiles installation system eliminates the need for glue, adhering tiles securely together to form a floor that “floats” for greater flexibility, easier replacement and long-term performance. The result? Less mess, less waste and virtually no VOCs, not to mention an environmental footprint that is over 90% lower than that of traditional glue adhesives. TacTiles are approved for use on GlasBac™ and CQuest™GB.



**Intersept®**  
*Mold protection.* Our proprietary preservative, Intersept, protects our modular carpet against mold growth and odor-causing bacteria—guaranteed. Intersept treated carpet, with proper maintenance, shows no mold or bacterial growth when tested per the ASTM E2471 Standard Test Method. Intersept is EPA approved for safe use in carpet, water insoluble and contains no halogens, heavy metals, phenols or formaldehyde. Intersept is standard in Interface carpet tile products backed with GlasBac, CQuestGB, ReadyBac™ and CushionBac Renew™.



**ReEntry™**  
*Recyclable.* Through our ReEntry program we reclaim and recycle our carpet tile and Sound Choice™ LVT. ReEntry is the only 3<sup>rd</sup> party certified recycling system among North American flooring manufacturers.



**Sustainability Transparency**  
Transparency and certified sustainability leadership come standard on Interface products. We enlist outside partners to help us evaluate the entire product lifecycle and reduce the environmental and human health impact of our flooring. And, carpet products made in our US facilities are made with 99% renewable energy.



**Help Lower Your Carbon Footprint**  
Like all the flooring products we sell, Interface carpet tile is carbon neutral across its full product life cycle through our third party verified Carbon Neutral Floors™ program. To find out more, visit [interface.com/carbonneutral](https://interface.com/carbonneutral)



**Environmental Product Declaration (EPD) –**  
A statement of product ingredients and environmental impacts over the entire life cycle of a product. A comprehensive life cycle assessment (LCA) is performed to ISO standards to develop an EPD, after which both the EPD and LCA must be third party verified.



**Health Product Declaration (HPD) –**  
A transparency tool for evaluating whether a product supports Green Chemistry. As part of our work on Health and Materials, Interface continuously reduces the environmental and health impacts of our products through elimination of materials of concern.



**CRI Green Label Plus –** An independent testing program that identifies carpet and adhesives with very low emissions of VOCs to help improve indoor air quality.



**NSF 140 Sustainable Carpet Assessment –**  
The only carpet sustainability standard in North America that evaluates the environmental impact of carpet for its entire lifecycle.

**📍 Samples**  
Register and order samples at [interface.com](https://interface.com). Not near a computer? You can also request samples by calling one of the numbers below.

|                                 |                                    |
|---------------------------------|------------------------------------|
| United States<br>1.877.605.1500 | Canada<br>1.866.398.3192           |
| Brazil<br>+ 5511.2196.0900      | Latin America<br>+ 52.55.2791.6812 |

**interface.com**  
Do more on [interface.com](https://interface.com)

- Browse products and order samples
- Save and share favorites
- See images of products in a variety of room scenes
- Browse floor designs, change colors, upload your own image, download and share
- Get full specifications, sustainability certifications and more
- Check order status and inventory availability
- Sign up to get the latest information on Interface products and news

**InterCircle Sample Return**  
Help us close the loop on the carpet sampling process. Through our InterCircle Sample Return program, sample materials stay out of the landfill and are re-used as samples until it is time to recycle them into new carpet. By reducing sample production material and diverting old materials from the landfill, we can reduce our overall environmental footprint.

Call 1.877.605.1500 (U.S.) or 1.866.398.3192 (Canada) to order a sample return bag with a prepaid return label.

We have tried our very best to accurately represent product colors. However, due to the nature of printed materials, color of actual products may vary slightly. Please request a sample to see actual product color.

All product specifications reflect averages derived from product sample testing, are subject to normal manufacturing and testing tolerances and inherent pattern variances, and may be changed without notice. For more information about these and other important attributes of the product(s) described herein, including recycled content and product warranty information, please see [interface.com/disclaimer](https://interface.com/disclaimer).